

PARTS CATALOGUE

2006 Year 00 Edition

JL50QT-5 scooter

CIXI KINGRING MOTORCYCLE CO.,LTD.

INDEX

E-01	CRANK CASE	1
E-02	CYLINDER HEAD COVER • CYLINDER HEAD	3
E-03	CYLINDER • CRANK CASE • PISTON	5
E-04	RIGHT CRANKCASE COVER	6
E-05	CARBURETOR	7
E-06	DRIVEN PULLEY	9
E-07	STARTINT MOTOR • OIL PUMP	11
E-08	FAN COVER • GENERATOR	12
E-09	TRANSMISSION	13
F-01	HEAD LIGHT	14
F-02	FRONT WINKER&FIND LAMP ASSY	15
F-03	METER ASSY.	16
F-04	OPERATING SYSTEM(DISK BRAKE)	17
F-05	FRONT FORT	19
F-6	FRONT WHEEL	20
F-7	FRONT COVER • FLOOR PEDAL	21
F-8	SEAT	22
F-9	BODY COVER • LUGGAGE BOX	23
F-10	FUEL TANK	24
F-11	AIR CLEAR	25
F-12	EXHAUST MUFFLER	26
F-13	REAR WHEEL	27
F-14	MAIN STAND ASSY&SIDE STAND ASSY.	28
F-15	REAR SHOCK ABSORBER	29
F-16	REAR LIGHT ASSY.&REAR FENDER ASSY.	30
F-17	WIRE HARNESS	31
F-18	FRAME BODY	33
F-19	CARRIER BOX	34
F-20	MARK	35

Address: Kingring Development Zone, Cixi City, Zhejiang, P.R.China

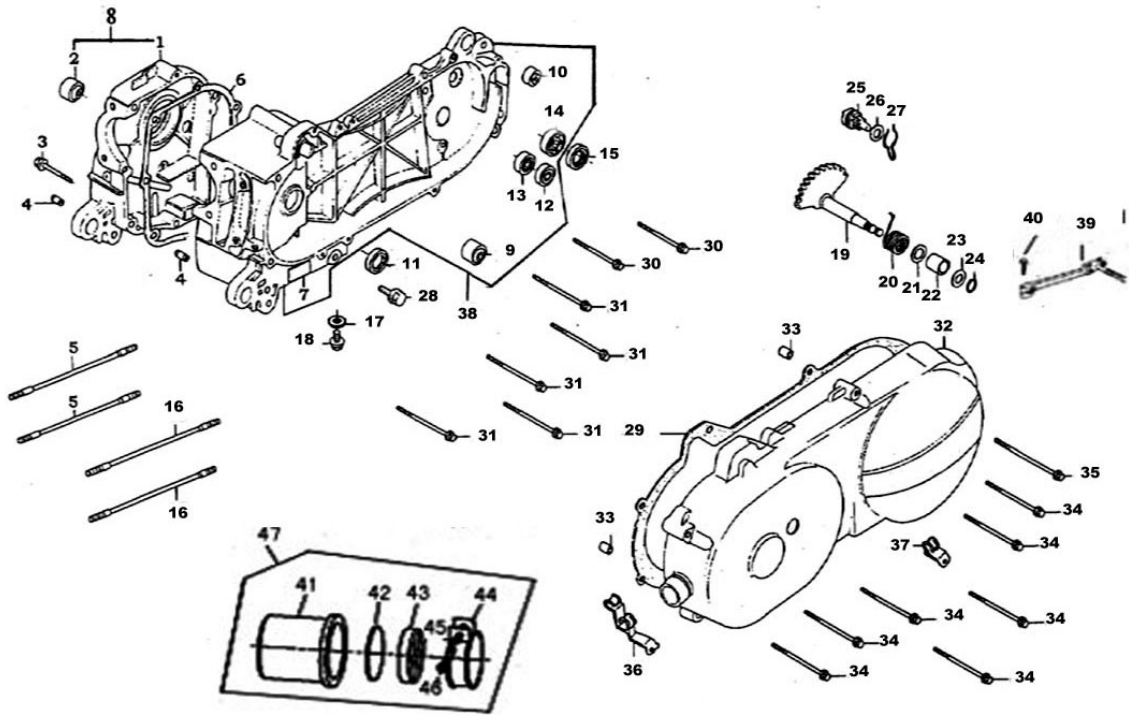
Tel: 86-574-63218692

Fax: 86-574-63218193

Code: 315301

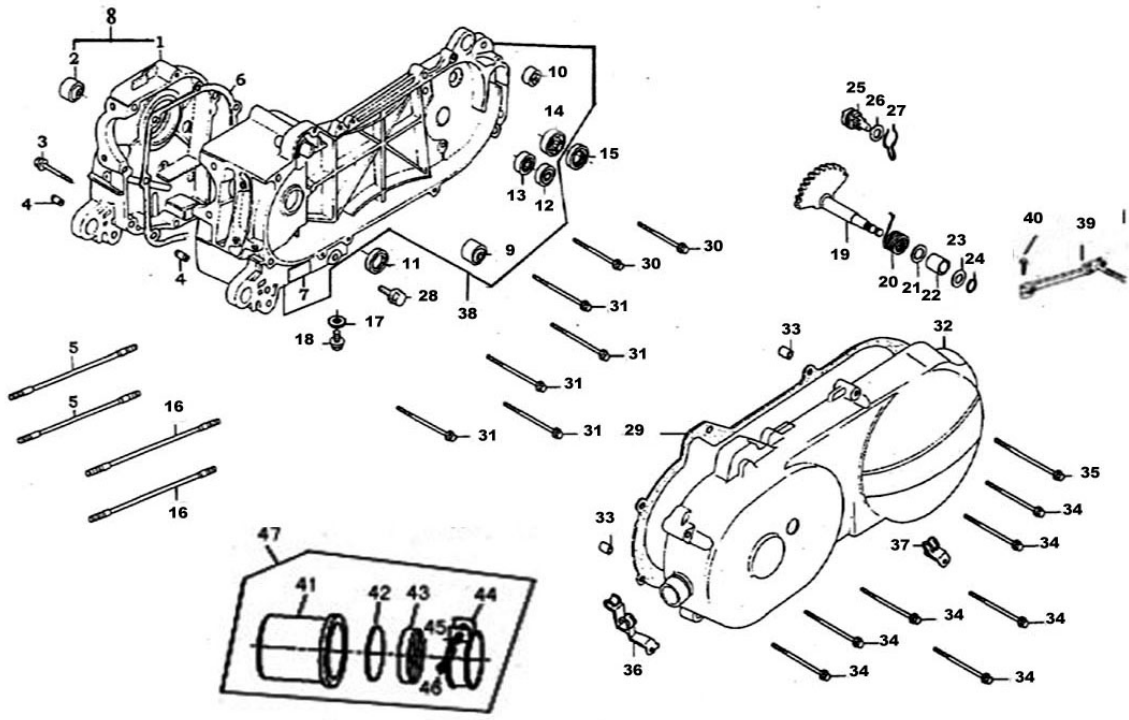
Http: www.kingringmotor.com

Email: motor@kingring.com



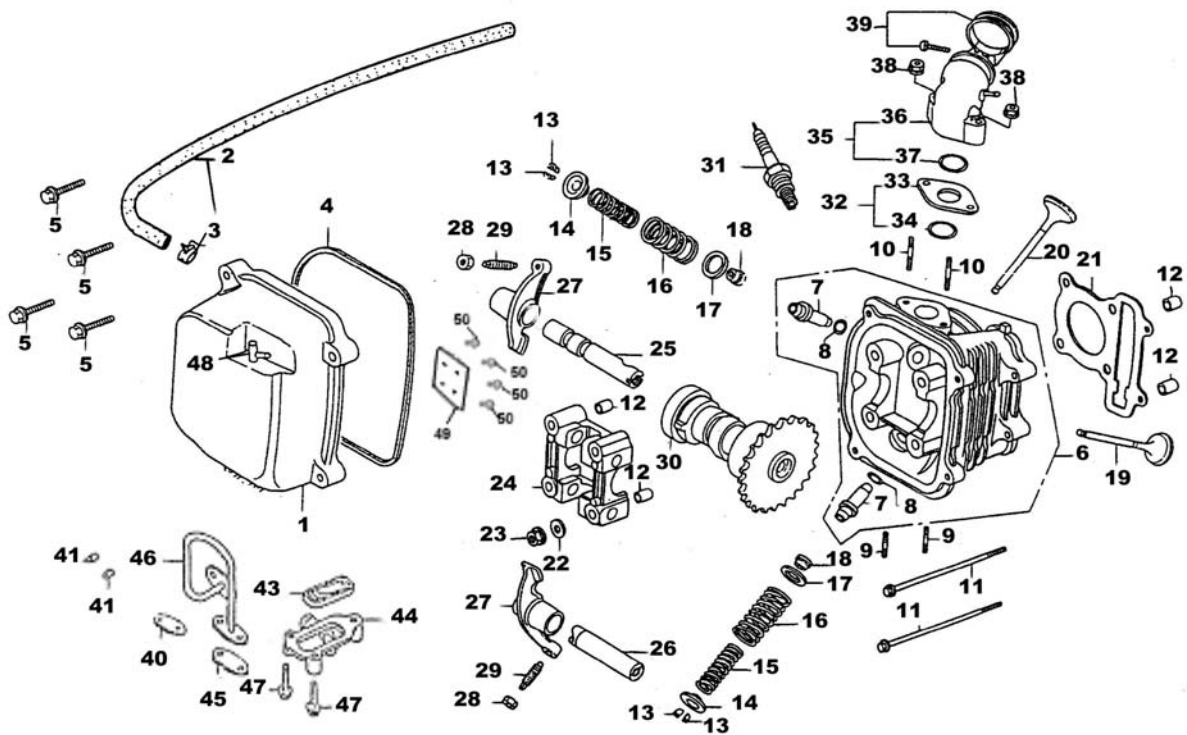
E-01 Crank case

REF.NO.	PART NO.	DESCRIPTION	Q.T.Y
1	E0101	CRANK CASE COMP RIGHT	1
2	E0102	RUB BUSH ENG HANGER	1
3	E0103	BOLT FLANGE SH M6×45	1
4	E0104	DOWEL PIN M8×14	2
5	E0105	BOLT STUD M7×168	2
6	E0106	GASTER CRANK CASE	1
7	E0107	CRANK CASE CIMP LEFT	1
8	E0108	CASE SET R CRANK	1
9	E0109	RUB BUSH ENG HANGER	1
10	E0110	UNDER RUBBER BUSH RR CUSHION	1
11	E0111	OIL SEAL 19.8×30×5	1
12	E0112	BEARING BALL RADIAL 6203	1
13	E0113	BRG BALL RADIAL 6201	1
14	E0114	BRG BALL RADIAL 6203	1
15	E0115	OIL SEAL 17×30×6	1
16	E0116	BOLT STUD 7×176	2
17	E0117	WASHER 8	1
18	E0118	BOLT OIL DRAIN	1
19	E0119	SPINDLE COMP KICK STARTER	1
20	E0120	SPRING KICK RETURN	1
21	E0121	COLLAR KICK BOSS	1
22	E0122	BUSH KICK SPINDLE	1
23	E0123	WASHER KICK SPINDLE	1
24	E0124	CIRCLIP EX 14	1



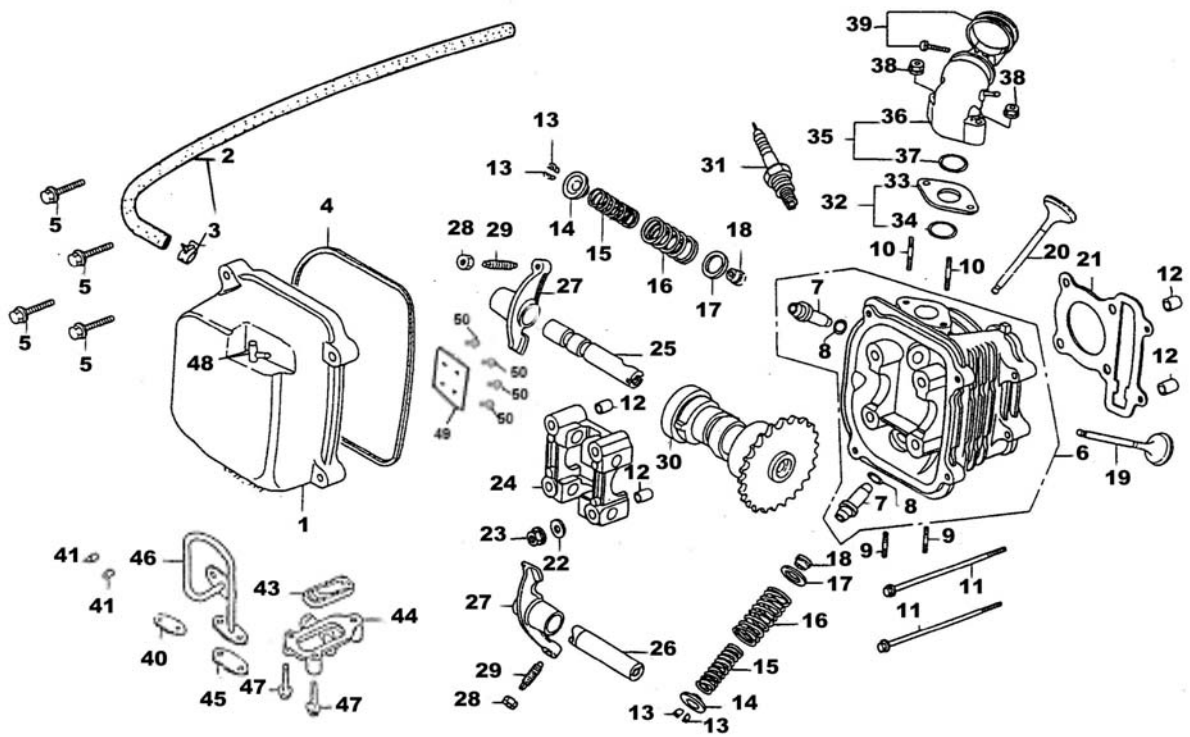
E-01 Crank case

REF.NO.	PART NO.	DESCRIPTION	Q.T.Y
25	E0125	GEAR COMP KICK DRIVEN	1
26	E0126	WASHER THRUST 10	1
27	E0127	SPG KICK DRIVEN GEAR	1
28	E0128	BOLT ASSY DRAIN PLUG	1
29	E0129	GASKET L COVER	1
30	E0130	BOLT FLANGE 8x35	2
31	E0131	BOLT FLANGE 8x40	5
32	E0132	COVER COMP L SIDE	1
33	E0133	DOWEL PIN 8x14	2
34	E0134	BOLT FLANGE 6x35	7
35	E0135	BOLT SPECIAL 8	1
36	E0136	CLAMPER THROTTLE CABLE	1
37	E0137	CLAMPER BRAKE CABLE	1
38	E0138	CRANK CASE SETL	1
39	E0139	KICK STARTER	1
40	E0140	NUT M6x25	1
41	E0141	RUBBER CAP	1
42	E0142	SPONGE	1
43	E0143	RUBBER PLATE	1
44	E0144	CLIP	1
45	E0145	WASHER	1
46	E0146	BOLT M4X35	1
47	E0147	INLET AIR CLEANER ASSY.	1
48	E0148	FILTER	1
49	E0149	CLIP	1



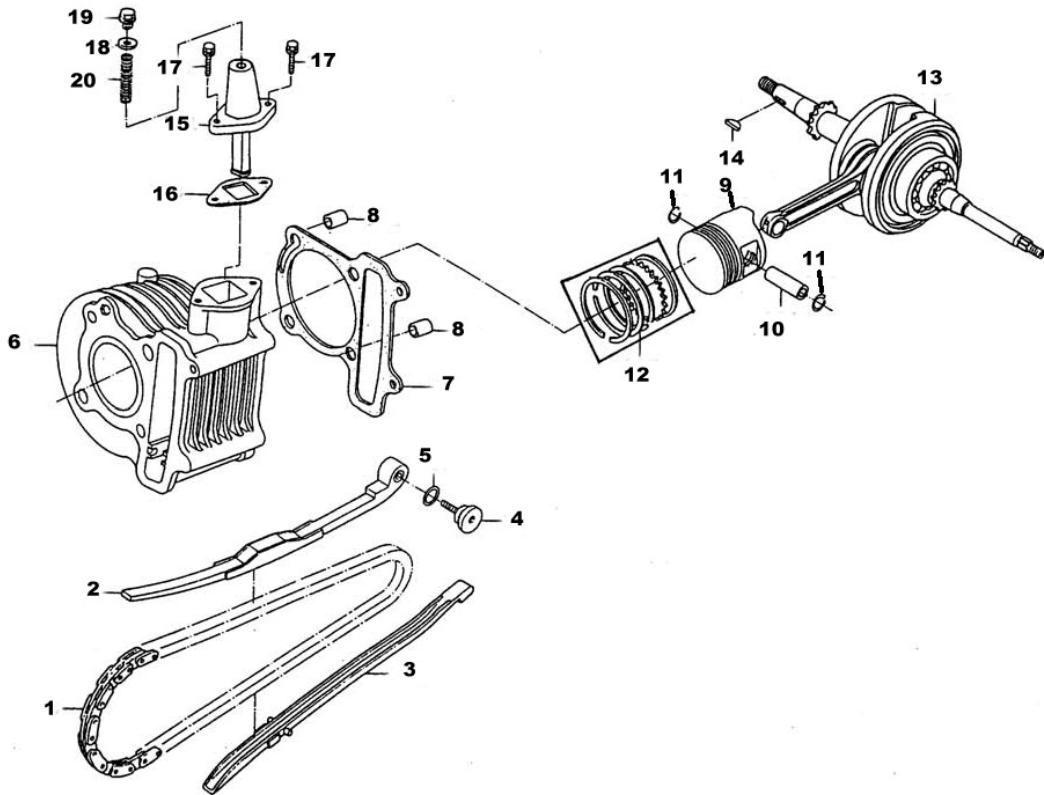
E-02 Cylinder Head Cover Cylinder Head

REF.NO.	PART NO.	DESCRIPTION	Q.T.Y
1	E0201	COVER COMP HEAD	1
2	E0202	TUBE BREATHER	1
3	E0203	CLIP B8 TUBE	1
4	E0204	GASKET HEAD COVER	1
5	E0205	BOLT FLANGE SH 6X25	4
6	E0206	HEAD COMP CYLN	1
7	E0207	GUIDE VALVE	2
8	E0208	O-RING 9X1.6	2
9	E0209	BOLT STUD 6X32	2
10	E0210	BOLT STUD II 6X50	2
11	E0211	BOLT FLANGE 6X85	2
12	E0212	PIN DOWEL SPECIAL 8X14	4
13	E0213	COTTER VALVE	4
14	E0214	RETAINER VALVE SPRING	2
14	E0215	SPG VALVE INNER	2
16	E0216	SPRING VALVE OUTER	2
17	E0217	SEAT VALVE SPG OUTER	2
18	E0218	SEAT VALVE STEM	2
19	E0219	VALVE EXHAUST	1
20	E0220	VALVE INLET	1
21	E0221	GASKET CYLINDER HEAD	1
22	E0222	WASHER SERALING 7MM	4
23	E0223	NUT FLANGE 7M/M	4
24	E0224	HOLDER CAM SHAFT	1
25	E0225	SHAFT COMP IN ROCKER ARM	1



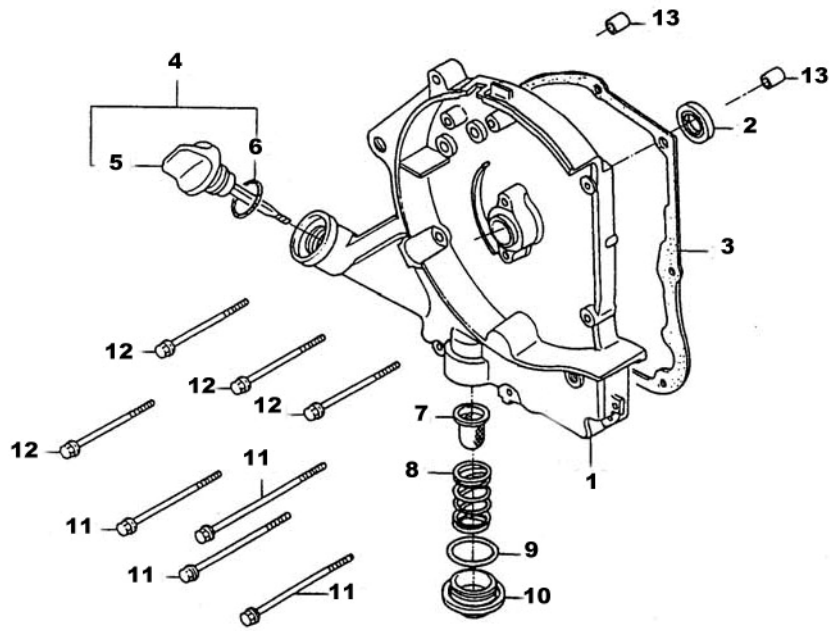
E-02 Cylinder Head Cover-Cylinder Head

REF.NO.	PART NO.	DESCRIPTION	Q.T.Y
26	E0226	SHAFTEXH ROCKER ARM	1
27	E0227	ARM VALVE ROCKER	2
28	E0228	NUT TAPPET ADJG	2
29	E0229	SCREW TAPPET ADJUSTING	2
30	E0230	SHAFT COMP CAM	1
31	E0231	SPARK PLUG(C7HSA)	1
32	E0232	INSULATOR CARB ASSY	1
33	E0233	INSULATOR CARB	1
34	E0234	O-RING 20.6X1.9	1
35	E0235	PIPE ASSY INLET	1
36	E0236	PIPE COMP INLET	1
37	E0237	O-RING 20.6X1.9	1
38	E0238	NUT FLANGE 6MM	2
39	E0239	BAND INSULATOR	1
40	E0240	GAKT A/IPPIPE	1
41	E0241	NUT HEX CAP 6MM	2
42	E0242	BOLT STUD 6X16	2
43	E0243	REED VALVE COMP	1
44	E0244	COVER REED VALVE	1
45	E0245	GAKT A/I PIPE	1
46	E0246	PIPE COMP AIR	1
47	E0247	BOLT FLANGER 6X40	2
48	E0248	METAL PIPE	1
49	E0249	METAL PLATE	1
50	E0250	BOLT M4X8	4



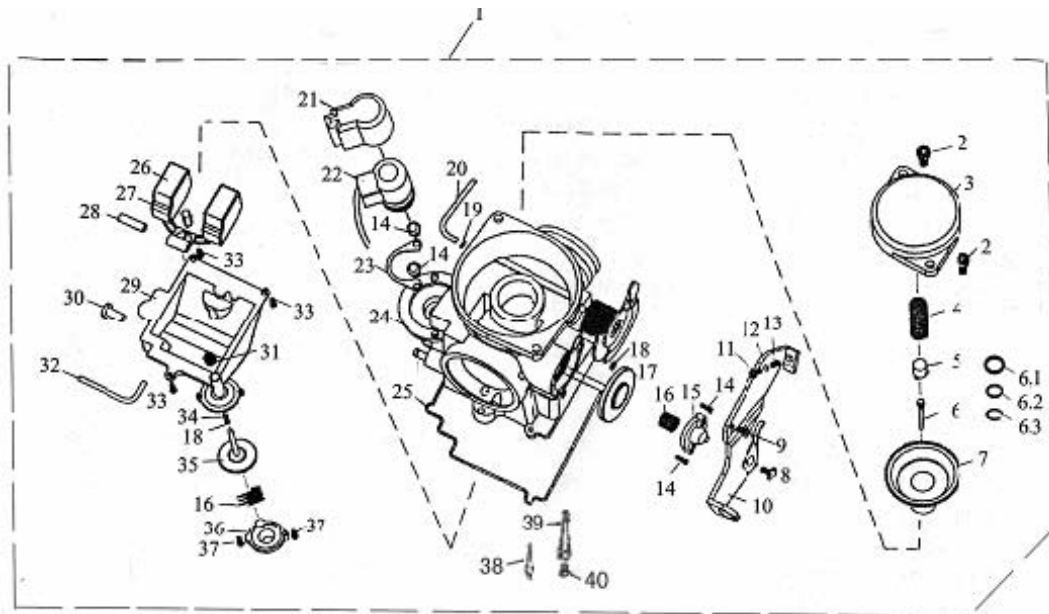
E-03 Cylinder-Crankcase-Piston

REF.NO.	PART NO.	DESCRIPTION	Q.T.Y
1	E0301	CHAIN CAM	1
2	E0302	TENSIONER CAM CHAIN	1
3	E0303	GUIDE COMP CAM CHAIN	1
4	E0304	PIVOT CAM CHAIN TENSIONER	1
5	E0305	O-RING 15.5-1.5	1
6	E0306	CYLINDER COMP	1
7	E0307	GASKET CYLINDER	1
8	E0308	PIN DOWEL SPECIAL 8X14	2
9	E0309	PISTON	1
10	E0310	PIN PISTON	1
11	E0311	PISTON PIN CLIF	2
12	E0312	RING SET PISTON	1
13	E0313	CRANK SHAFT COMP	1
14	E0314	KEY WOODRUFF	1
15	E0315	ADJUSTER CAM CHAIN	1
16	E0316	GASKET CAM CHAIN	1
17	E0317	BOLT FLANGE 6X18	2
18	E0318	WASHER SEALING 8X16X1.6	1
19	E0319	PLUG ADJUSTER	1
20	E0320	SPRING CAM CHAIN ADJUSTER	1



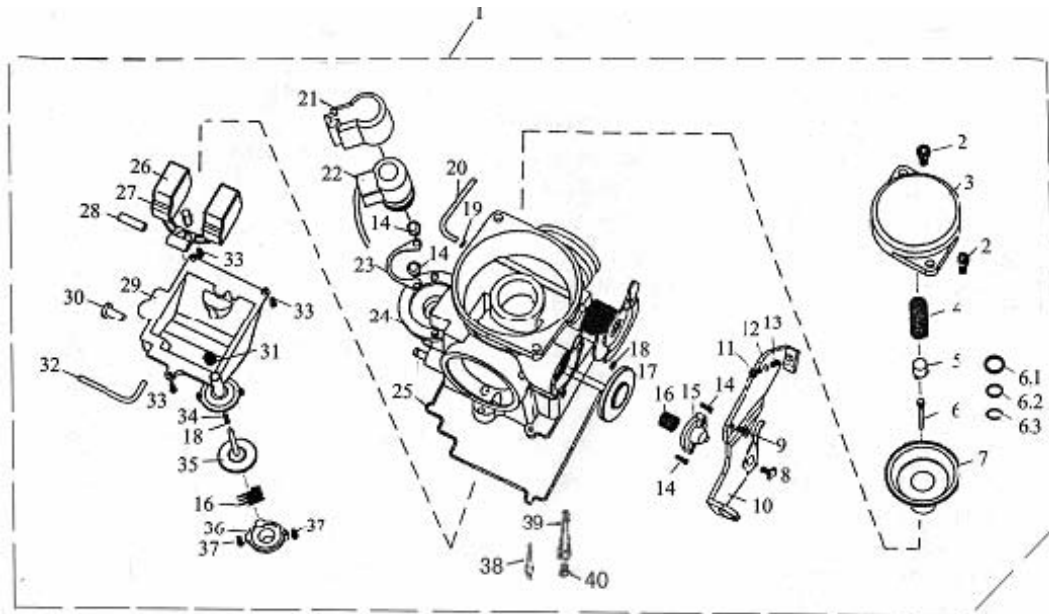
E-04 Right Crankcase Cover

REF.NO.	PART NO.	DESCRIPTION	Q.T.Y
1	E0401	COVER R CRANK CASE	1
2	E0402	OIL SEAL 16.4X30X5	1
3	E0403	GASTER R COVER	1
4	E0404	GAUGE OIL LEVEL ASSY	1
5	E0405	GAUGE OIL LEVEL	1
6	E0406	O-RING 18X3	1
7	E0407	SCREEN OIL FILTER	1
8	E0408	SPG OIL FILTER SCREEN	1
9	E0409	O-RING 30X8M/M	1
10	E0410	HOLE CAP TAPPET ADJUSTING	1
11	E0411	BOLT FLANGE SH M6X100	4
12	E0412	BOLT FLANGE M6X85	4
13	E0413	DOWEL PIN 8X14	2



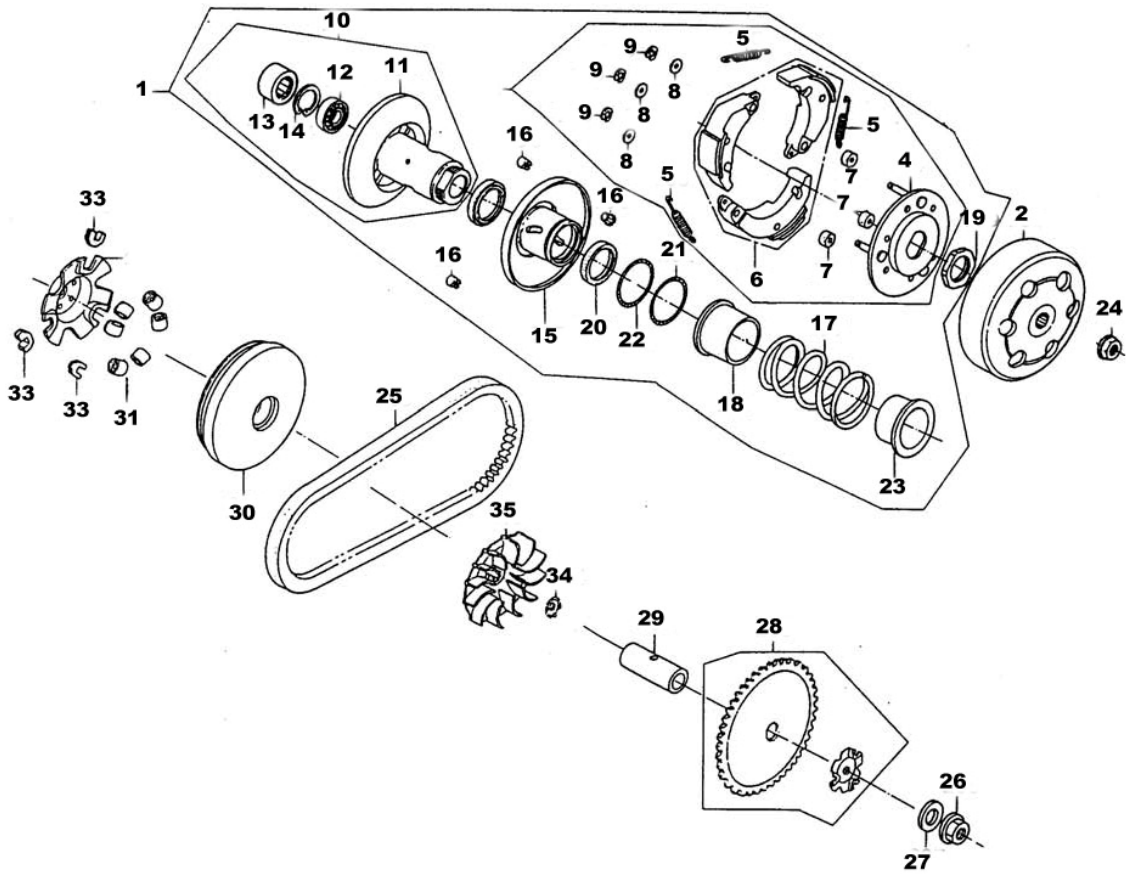
E-05 Carburetor

REF.NO.	PART NO.	DESCRIPTION	Q.T.Y
1	E0501	CARBURETOR	1
2	E0502	SCREW SPRING PLATE	2
3	E0503	SPRING PLATE	1
4	E0504	PLATE SPRING	1
5	E0505	SPRING SOCKET	1
6	E0506	JET CARBURETOR	1
6.1	E0506.1	WASHER	1
6.2	E0506.2	O-RING	1
6.3	E0506.3	CLIP	1
7	E0507	PISTON COMP.VACUUM	1
8	E0508	CONTROL LEVER	1
9	E0509	SCREW M5X8	1
10	E0510	SCREW M5X14	1
11	E0511	SCREW M4X17	1
12	E0512	WASHER4	1
13	E0513	SPRING	1
14	E0514	SCREW M4X8	4
15	E0515	ACV VALVE COVER	1
16	E0516	SPRING ACV VALVE	1
17	E0517	ACV VALVE	1
18	E0518	SEALING	2
19	E0519	CLIP,TUBE	1



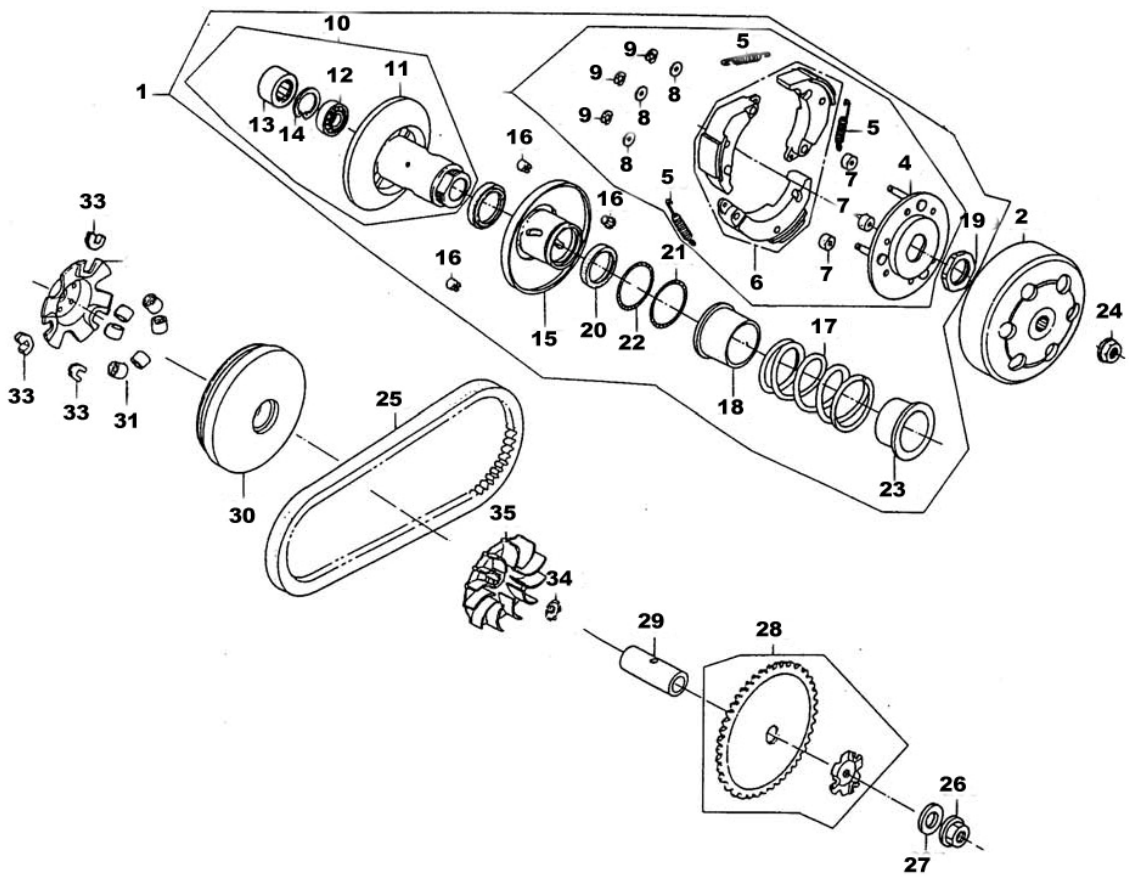
E-05 Carburetor

REF.NO.	PART NO.	DESCRIPTION	Q.T.Y
20	E0520	BREATHER TUBE	1
21	E0521	CAP, STERTER VALVE	1
22	E0522	VALUESET, STARTER ASSY.	1
23	E0523	STARTER SOCKET	1
24	E0524	CARBURETOR BODY	1
25	E0525	SEAL, FLOAT CHAMBER	1
26	E0526	FLOAT	1
27	E0527	FLOAT VALVE ASSY.	1
28	E0528	PIN. FLOAT VALVE	1
29	E0529	CAP CARBURETOR	1
30	E0530	SCREW, FUEL LEAKAGE	1
31	E0531	DUST SEAL CAP	1
32	E0532	OVER FLOW TUBE	1
33	E0533	SCREW M4X12	3
34	E0534	SEALING RING	1
35	E0535	PLUG PUMP ASSY	1
36	E0536	PUMP DOWN COVER	1
37	E0537	SCREW M4X10	2
38	E0538	JET IDLE RUNNING	1
39	E0539	MAIN JET	1
40	E0540	MAIN JET COLUMN	1



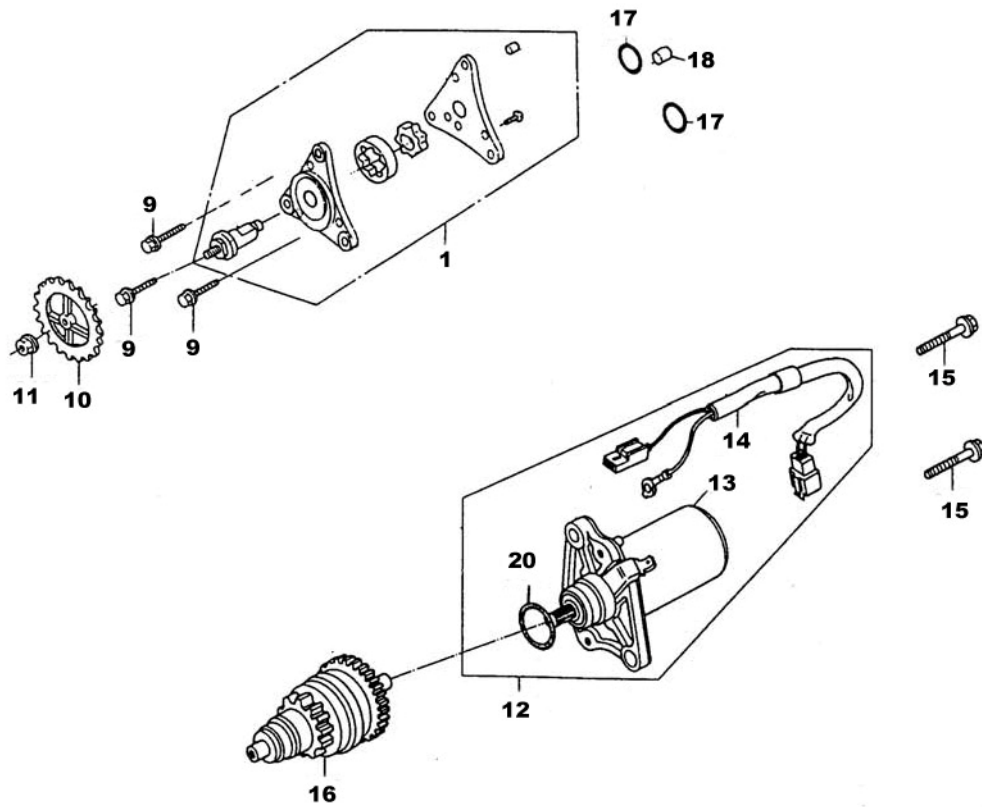
E-06 Driven Pulley

REF.NO.	PART NO.	DESCRIPTION	Q.T.Y
1	E0601	PLATE SUB ASSY DRIVE	1
2	E0602	CLUTCH OUTER	1
3	E0603	PLATE ASSY DRIVE	1
4	E0604	PLATE COMP DRIVE	1
5	E0605	SPRING CLUTCH	3
6	E0606	WEIGHT SET CLUTCH	1
7	E0607	RUBBER CLUTCH DUMPER	3
8	E0608	6M/M THRUST WASHER	3
9	E0609	CIRCLIP 6MM	3
10	E0610	FACE ASSY DRIVEN	1
11	E0611	FACE COMP DRIVEN	1
12	E0612	BRG RADIAL BALL 6901U	1
13	E0613	BRG NEEDLE 17X25X18	1
14	E0614	CIRCLIP IN	1
15	E0615	FACE COMP MOVABLE DRIVEN	1
16	E0616	PIN GUIDE	3
17	E0617	SPG DRIVEN FACE	1
18	E0618	COLLAR SEAL	1
19	E0619	NUT SPECIAL M28	1
20	E0620	OIL SEAL 34X39X3	2
21	E0621	O-RING 36X1.5	1
22	E0622	O-RING 39.2X2.2	1
23	E0623	COLLAR SPG	1
24	E0624	NUT FLANGE M10	1
25	E0625	BELT DRIVE	1



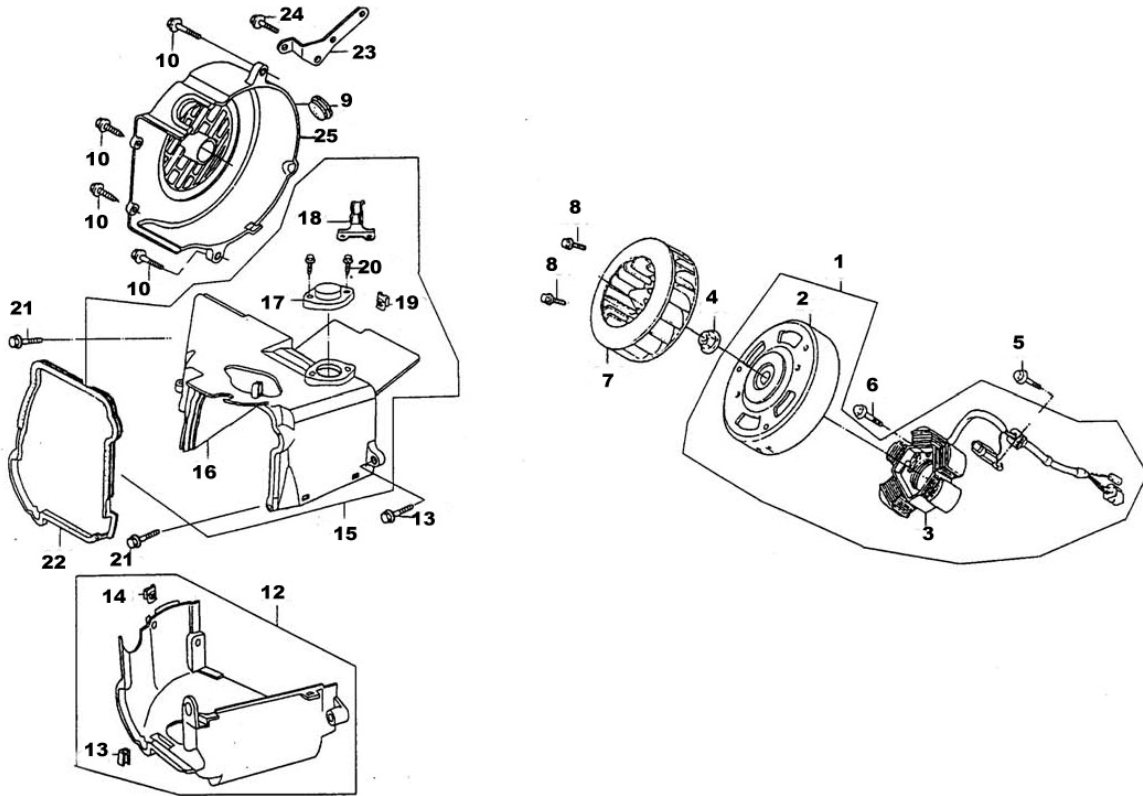
E-06 Driven Pulley

REF.NO.	PART NO.	DESCRIPTION	Q.T.Y
26	E0626	NUT HEX M12	1
27	E0627	WASHER SPECIAL 12	1
28	E0628	FACE DRIVE	1
29	E0629	BOSS DRIVE FACE	1
30	E0630	FACE COMP MOVABLE DRIVE	1
31	E0631	ROLLER COMP WEIGHT	6
32	E0632	PLATE RAMP	1
33	E0633	PIECE SLIDE	3
34	E0634	RATCHET KICK STARTER	1
35	E0635	FAN CVT COOLING	1



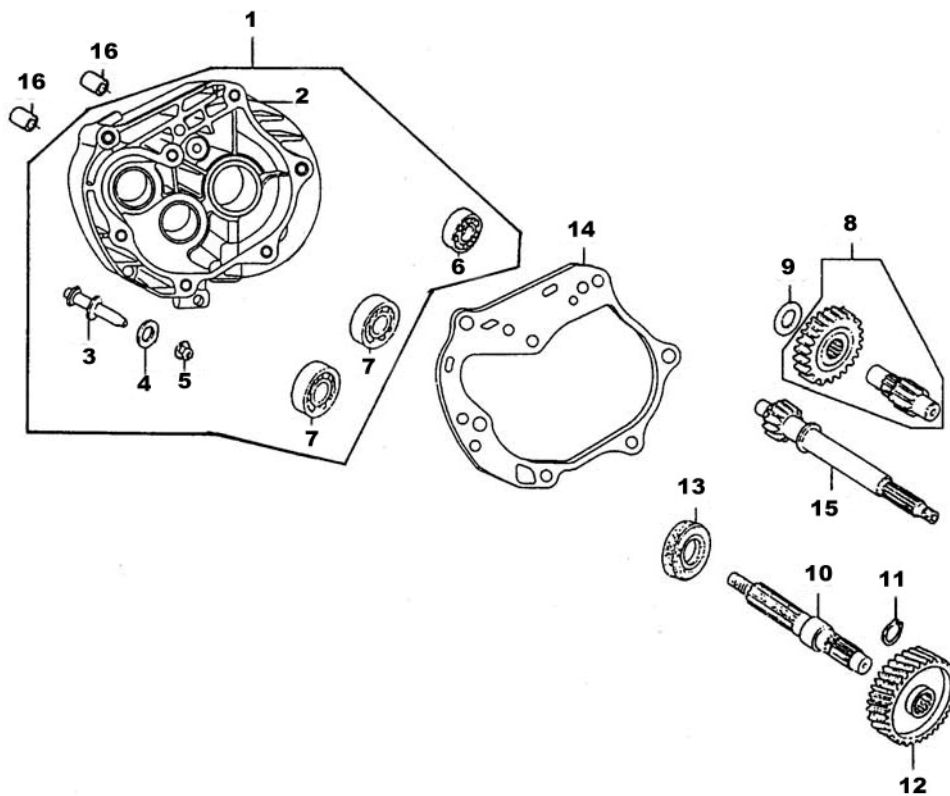
E-07 Starting Motor-Oil Pump

REF.NO.	PART NO.	DESCRIPTION	Q.T.Y
1	E0701	PUMP ASSY OIL	1
2	E0702	SHAFT OIL PUMP	1
3	E0703	BODY OIL PUMP	1
4	E0704	ROTOR OIL PUMP OUTER	1
5	E0705	ROTER OIL PUMP INNER	1
6	E0706	PLATE OIL PUMP	1
7	E0707	SCREW M4X10	3
8	E0708	DOWEL PIN 4X6.5	1
9	E0709	BOLT FLANGE 6X20	2
10	E0710	GEAR OIL PUMP DRIVEN	1
11	E0711	NUT FLANGE M6	1
12	E0712	MOTOR ASSY START	1
13	E0713	MOTOR UNIT START	1
14	E0714	SUB HARNESS	1
15	E0715	BOLT FLANGE SH 6X25	2
16	E0716	PINION ASSY STARTER	1
17	E0717	O-RING 9X1.6	2
18	E0718	PIN DOWELL 8X10	1
19	E0719	BOLT FLANGE M6X25	1
20	E0720	O-RING	1



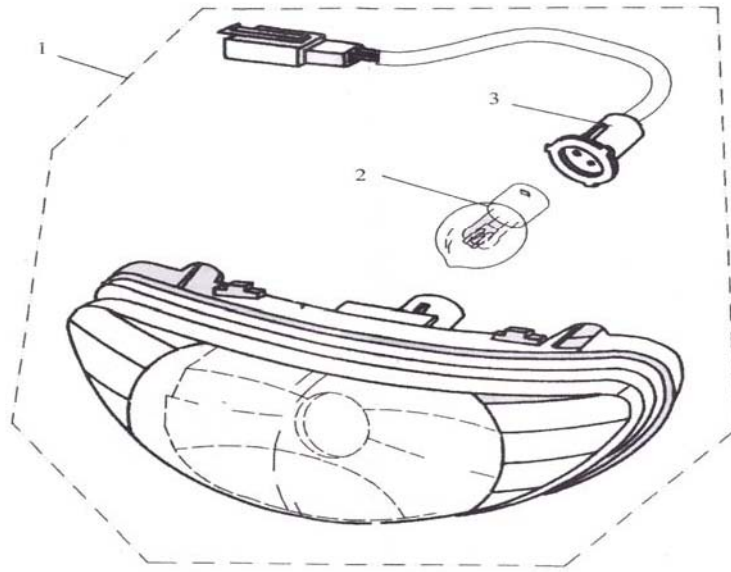
E-08 Fan Cover-Generator

REF.NO.	PART NO.	DESCRIPTION	Q.T.Y
1	E0801	AC GEN ASSY	1
2	E0802	FLYWHEEL COMP	1
3	E0803	STATOR COMP	1
4	E0804	NUT FLANGE M10	1
5	E0805	BOLT HEX M5X12	2
6	E0806	BOLT FLANGE M6X22	2
7	E0807	FAN COMP COOLING	1
8	E0808	BOLT FLANGE M6X18	4
9	E0809	GROM B SIDE PNL	1
10	E0810	BOLT FLANGE M6X25	3
11	E0811	SCREW TAPPING 5X16	2
12	E0812	SHROUD ASSY A	1
13	E0813	SHROUD COMP A	1
14	E0814	NUT CLIP 6MM	2
15	E0815	SHROUD ASSY B	1
16	E0816	SHROUD COMP B	1
17	E0817	BOX TENSIONER LIFTER	1
18	E0818	CLIP VACUUM TUBE	1
19	E0819	NUT CLIP 6MM	1
20	E0820	SCREW TAPPING M4X12	2
21	E0821	BOLT FLANG M6X16	2
22	E0822	SEAL SHROUD	1
23	E0823	STAY FENDER	1
24	E0824	BILT FLANGE M6X12	1
25	E0825	COVER ASSY FAN	1



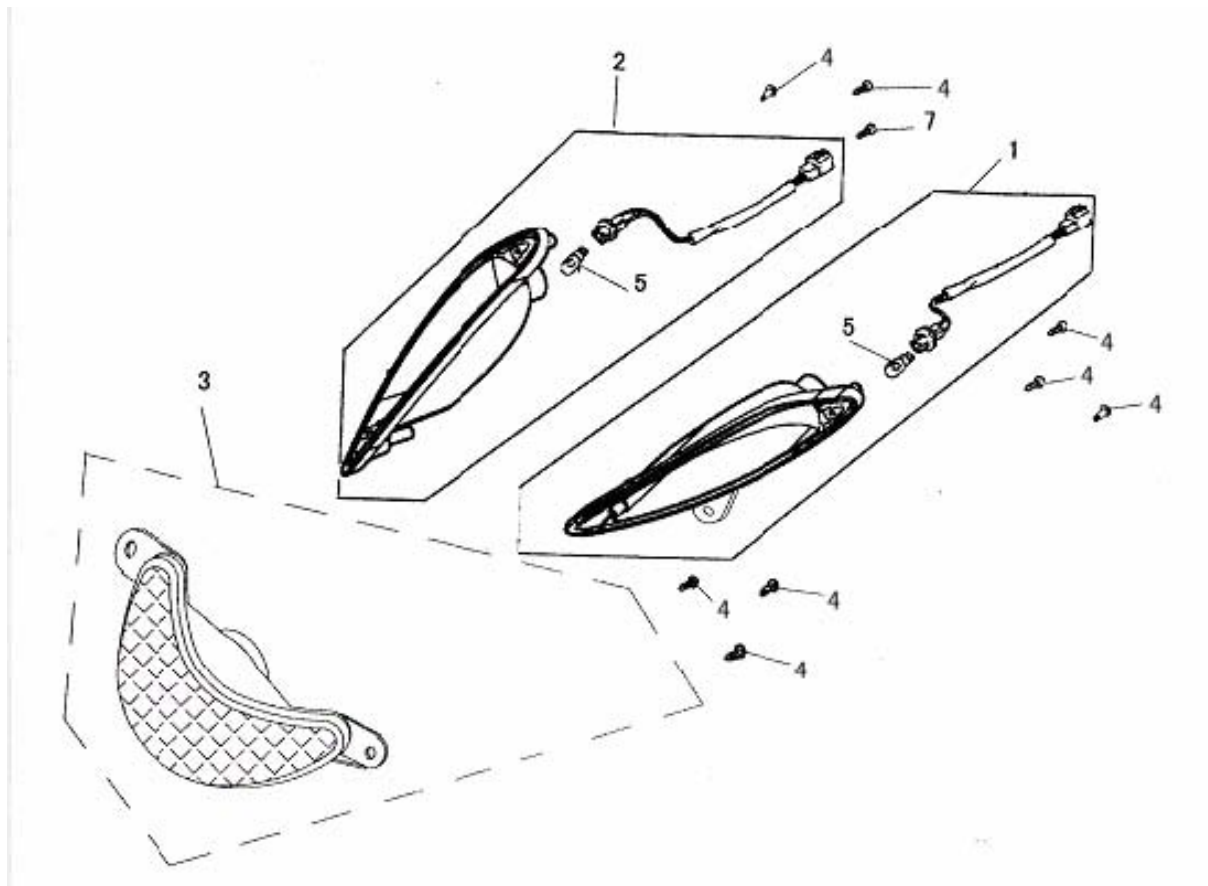
E-09 Transmission

REF.NO.	PART NO.	DESCRIPTION	Q.T.Y
1	E0901	CASE SET MISSION	1
2	E0902	MISSION CASE BODY	1
3	E0903	PIN BRAKE SHOE ANCHOR	1
4	E0904	O-RING 7.5X1.5	1
5	E0905	NUT FLANGE M8	1
6	E0906	BRG BALL RAKIAL 6004UU	1
7	E0907	BRG BALL RADIAL 6201	2
8	E0908	SHAFT COMP COUNTER	1
9	E0909	WASHER SIDE 12	1
10	E0910	SHAFT FINAL	1
11	E0911	CIRCLIP 20MM	1
12	E0912	GEAR FINAL	1
13	E0913	OIL SEAL 27X42X7	1
14	E0914	GASKET MISSION CASE	1
15	E0915	SHAFT DRIVE	1
16	E0916	DOWEL PIN 10X20	2



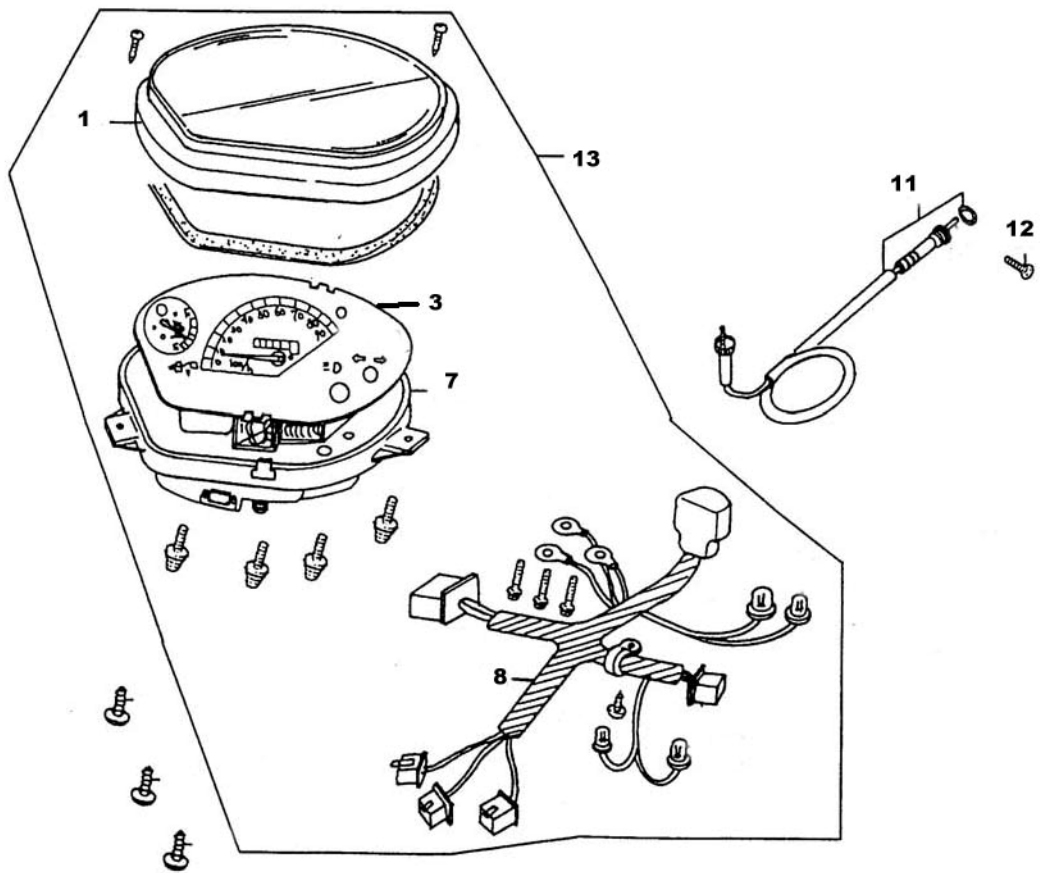
F-01 Headlight

REF.NO.	PART NO.	DESCRIPTION	Q.T.Y
1	F0101	HEAD LIGHT ASSY	1
2	F0102	HEAD LIGHT BULB	1
3	F0103	LAMP HOUSING	1
4	F0104	BOLT M5×18	1



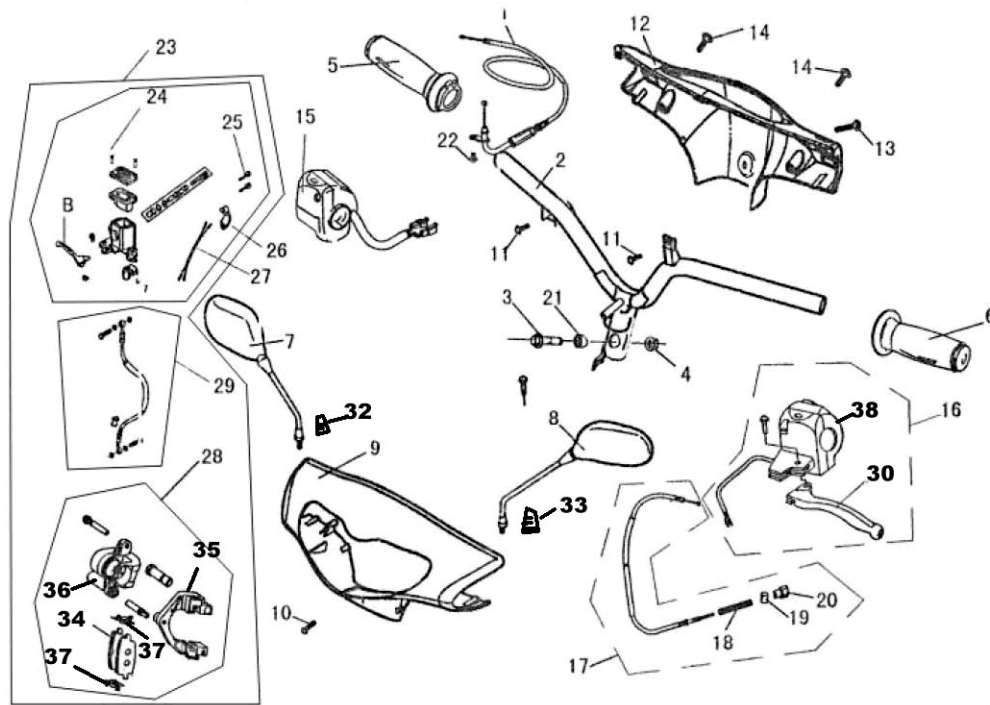
F-02 SIGNAL LIGHT

REF.NO.	PART NO.	DESCRIPTION	Q.T.Y
1	F0201	FR.LEFT TURN SIGNAL ASSY	1
2	F0202	FR.RIGHT TURN SIGNAL ASSY	1
3	F0203	FT.LAMP ASSY	1
4	F0204	SCREW TAPPING	9
5	F0205	TURN SIGNAL BULB	2



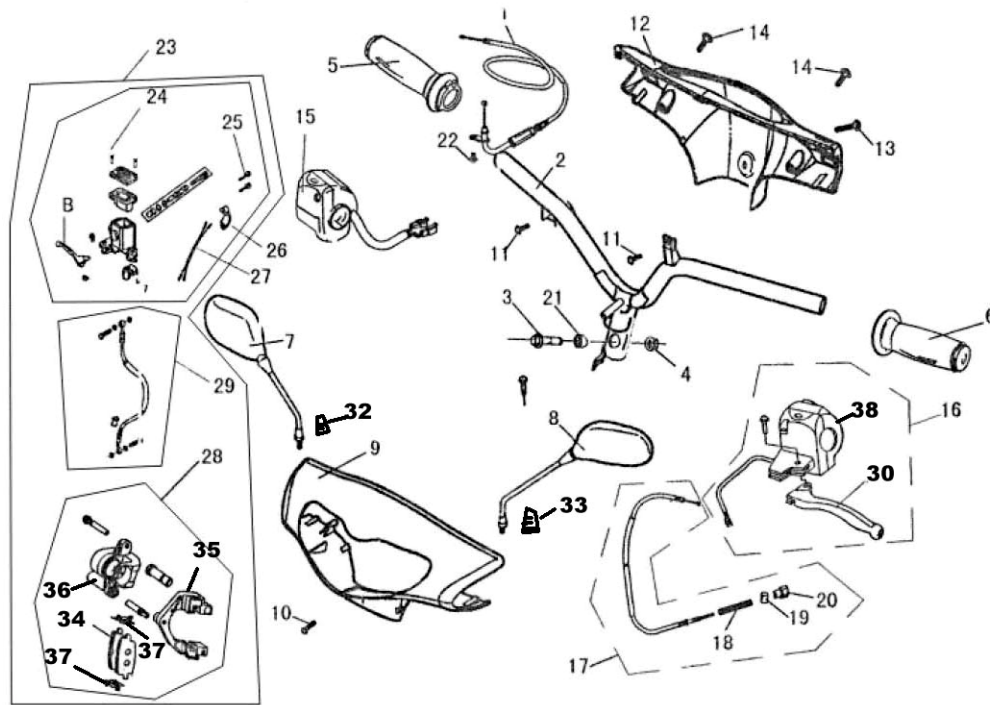
F-03 Meter Assy

REF.NO.	PART NO.	DESCRIPTION	Q.T.Y
1	F0301	LENS	1
2	F0302	BOLT M4×10	6
3	F0303	COVER SPEEDOMETER	1
4	F0304	COIL COMP OIL METER	1
5	F0305	TRANSMISSION COMP SPEEDOMETER	1
6	F0306	BOLT M3×22	3
7	F0307	CASE ASSY	1
8	F0308	SOCKET COMP METER	1
9	F0309	FLAT WASHER	2
10	F0310	SPRING WASHER	2
11	F0311	CABLE DISTANCE DATA	1
12	F0312	BOLT	1
13	F0313	METER ASSY	1



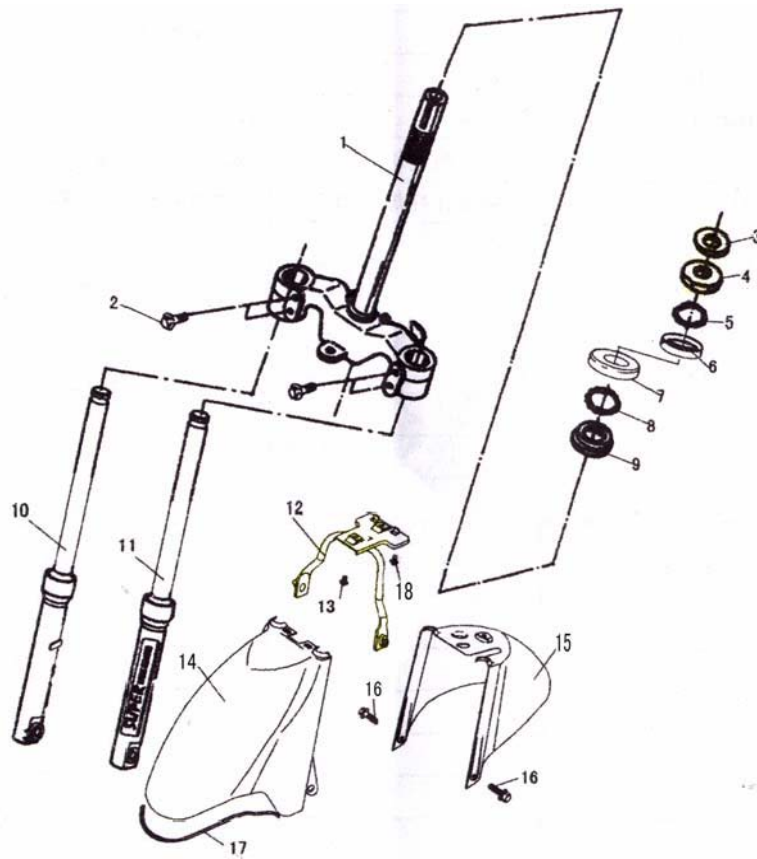
F-04 Operating System (disk brake)

REF.NO.	PART NO.	DESCRIPTION	Q.T.Y
1	F0401	OIL CABLE	1
2	F0402	HANDBAR	1
3	F0403	BOLT M10×45	1
4	F0404	GRIP NUT	1
5	F0405	CRIP THROTTLE ASSY	1
6	F0406	LEFT GRIP	1
7	F0407	R.MIRROR COMP BACK	1
8	F0408	L.MIRROR COMP BACK	1
9	F0409	FR. PART HEAD COVER WITH COLOR	1
10	F0410	BOLT M6×12	1
11	F0411	SCREW,TAPPING	2
12	F0412	REAR PART,HEAD COVER	1
13	F0413	BOLT M6×18	1
14	F0414	SCREW,TAPPING	2
15	F0415	R SWITCH ASSY.	1
16	F0416	L SWITCH ASSY.	1
17	F0417	REAR BRAKE LINK ASSY	1
18	F0418	SPRING	1
19	F0419	JOINT BRAKE ARM	1
20	F0420	NUT ADJUST	1
21	F0421	BUSH	1
22	F0422	BOLT	1



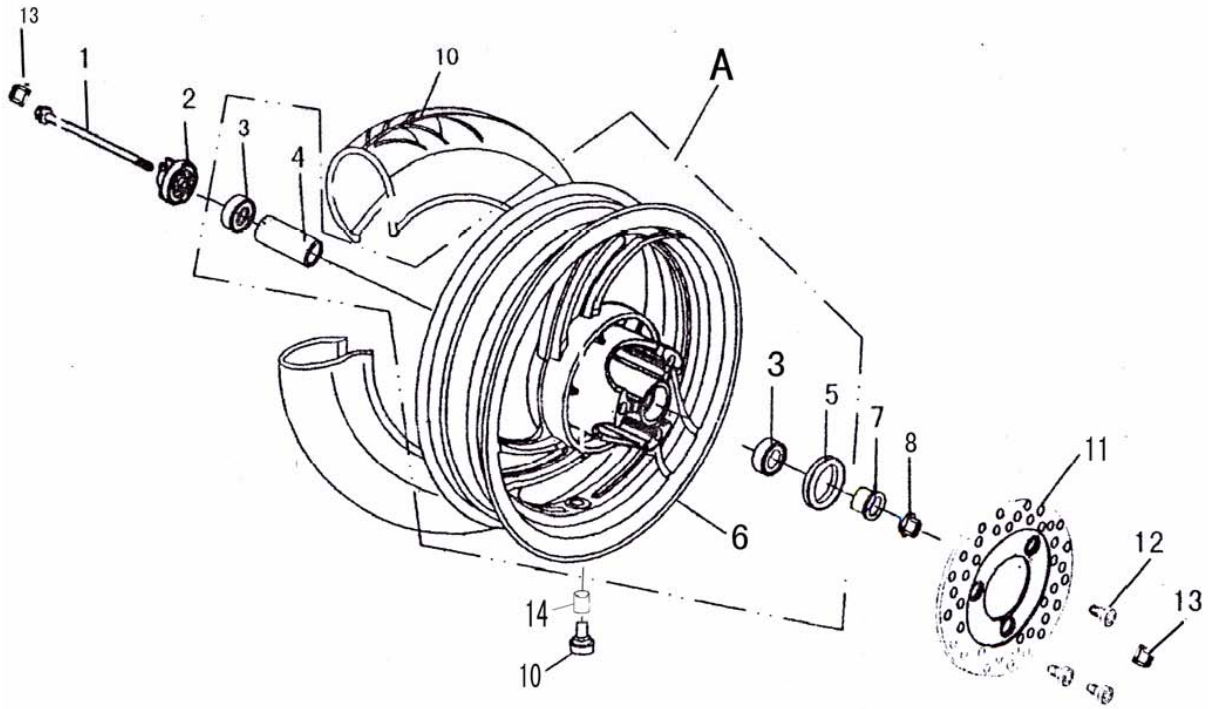
F-040 Operating System (disk brake)

REF.NO.	PART NO.	DESCRIPTION	Q.T.Y
23	F0423	DISK BRAKE ASSY	1
24	F0424	MASTER CYLINDER ASSY	1
25	F0425	BOLT	2
26	F0426	PRESURE BLOCK	1
27	F0427	FR.STOP HARNESS	1
28	F0428	CALIPER ASSY	1
29	F0429	BRAKE HOSE ASSY	1
30	F0430	R.BRAKE HANDLE	1
31	F0431	L.BRAKE HANDLE	1
32	F0432	RUBBER SOCKET R. MIRROR	1
33	F0433	RUBBER SOCKET R. MIRROR	1
34	F0434	SHOE	1
35	F0435	BRAKE CLIP	1
36	F0436	DOWN PUMP	1
37	F0437	FIXED SPRING PLATE	2
38	F0438	L SWITCH PART	1



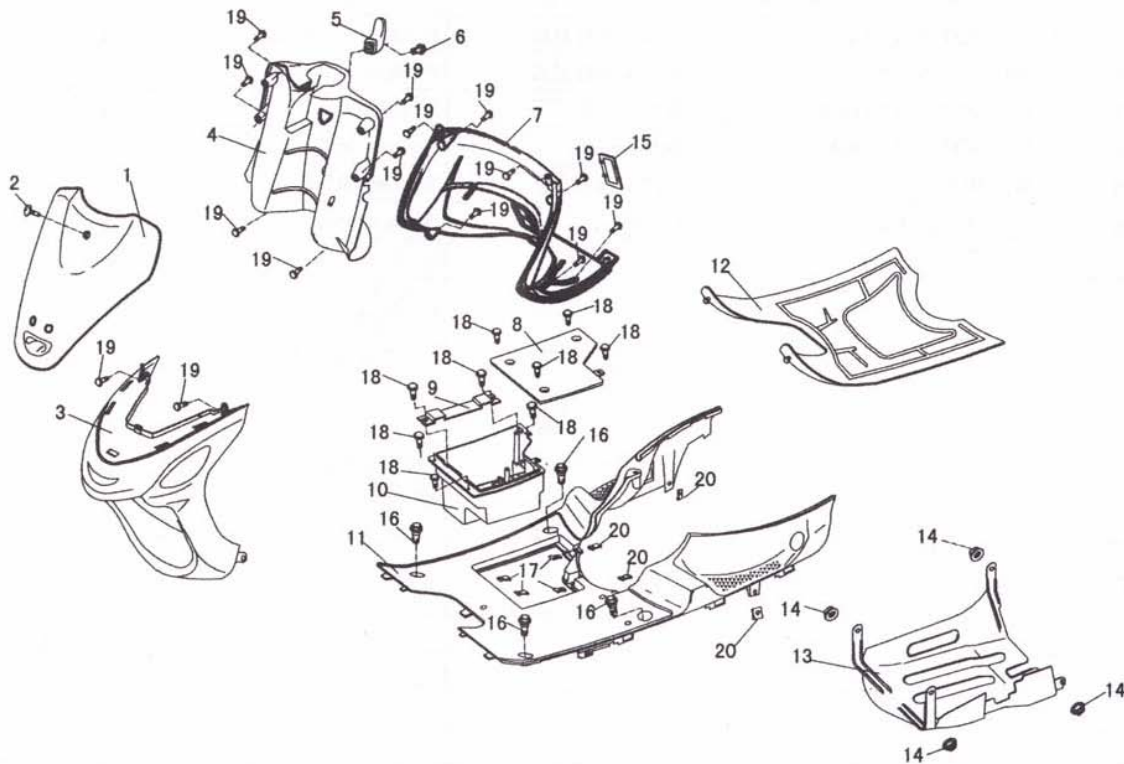
F-05 Front Fork

REF.NO	PART NO.	DESCRIPTION	Q.T.Y
1	F0501	STEERING COLUMN WELDING ASSY	1
2	F0502	BOLT FLLANGE M6×40	4
3	F0503	ASSMBLING NUT STEERING COLUMN	1
4	F0504	RASE BALL UPPER	1
5	F0505	BALL UPPER	1
6	F0506	RASE UPPER	1
7	F0507	RASE LOW	1
8	F0508	BALL LOW	1
9	F0509	RASE BALL LOW	1
10	F0510	FR.FORK SHOCK ABSORBER ASSY(L)	1
11	F0511	FR.FORK SHOCK ABSORBER ASSY(R)	1
12	F0512	FENDER WELDING ASSY	1
13	F0513	BOLT	2
14	F0514	FR.PART,FR.FENDER	1
15	F0515	REAR PART,FR.FENDER	1
16	F0516	BOLT	2
17	F0517	RUBBER FR.FENDER	1
18	F0518	BOLT	2



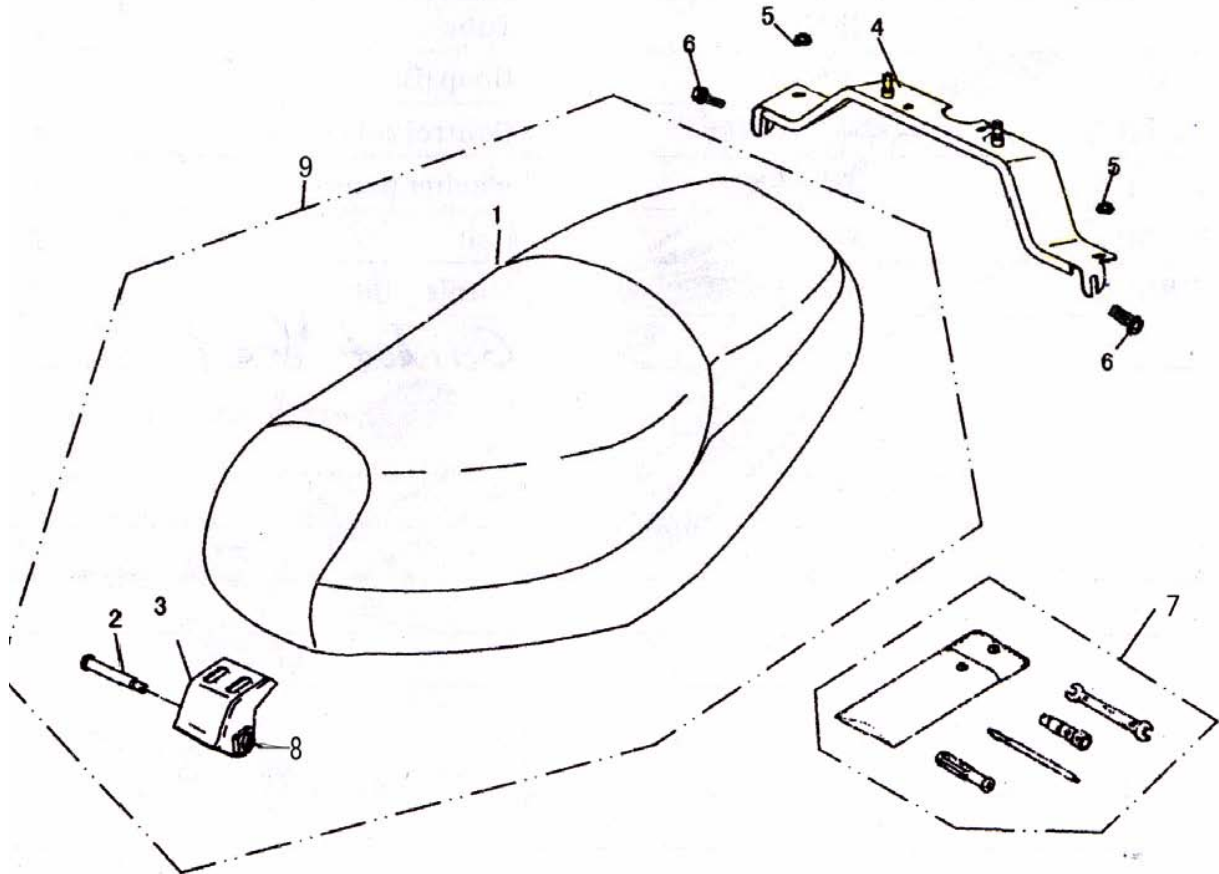
F-06 Front Wheel

REF.NO.	PART NO.	DESCRIPTION	Q.T.Y
1	F0601	AXLE FR.WHEEL	1
2	F0602	COUNTER	1
3	F0603	BEARING 6201	2
4	F0604	CENTRAL SET	1
5	F0605	SEAL DRST	1
6	F0606	FRONT WHEEL ASSY	1
7	F0607	BUSH	1
8	F0608	NUT M12	1
9	F0609	TIRE3.50-10	1
10	F0610	VALVE	1
11	F0611	DISK BRAKE	1
12	F0612	DISK BRAKE BOLT	3
13	F0613	RUBBER CAPφ14	2
14	F0614	CAP	1
A	F06A	RIM ASSY.	1



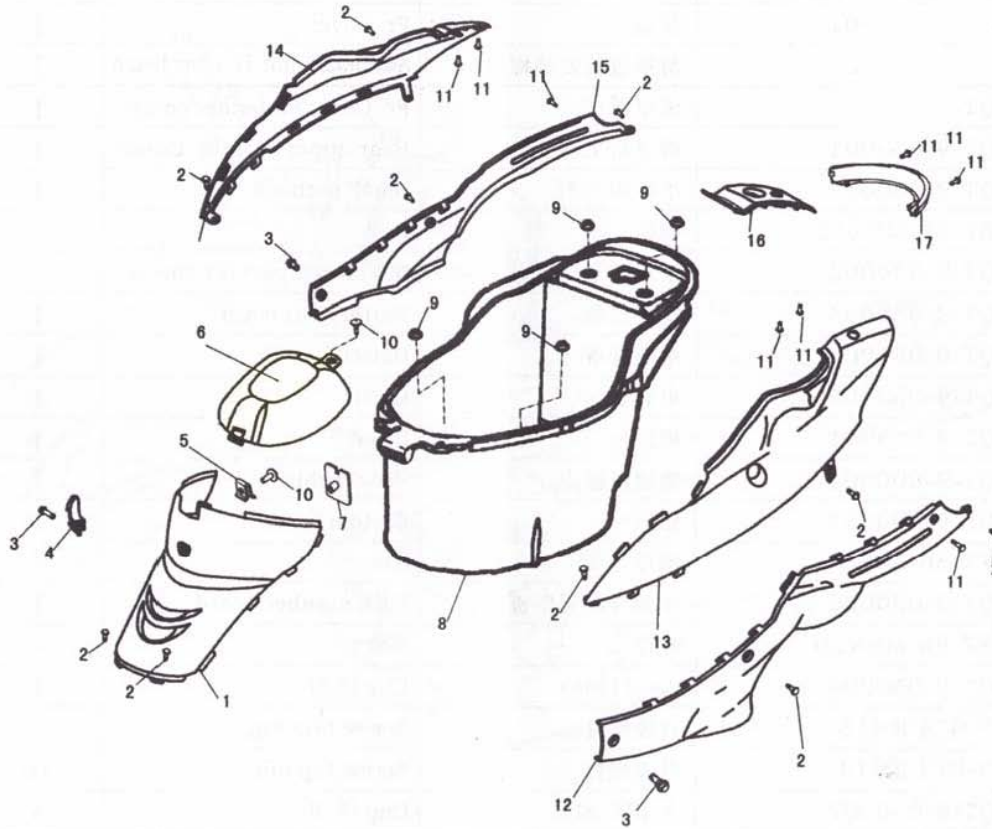
F-07 Front Cover/Floor Pedal

REF.NO.	PART NO.	DESCRIPTION	Q.T.Y
1	F0701	FR.COVER	1
2	F0702	ASSEMBLING,NUT,FR.COVER BOARD M6×20	1
3	F0703	FR,COVER FR.FENDER COMP	1
4	F0704	REAR UPPER PART(FR.COVER)	1
5	F0705	SMALL POTHOOK	1
6	F0706	BOLT M8×22	1
7	F0707	REAR LOWER PART(F.FR.COVER)	1
8	F0708	BATTERY BOX COVER	1
9	F0709	BATTERY BAND	1
10	F0710	BATTER BOX	1
11	F0711	PEDAL	1
12	F0712	PEDAL RUBBER	1
13	F0713	BOTTOM COVER	1
14	F0714	NUT	4
15	F0715	FORK NUMBER BOARD	1
16	F0716	BOLT M6×18	4
17	F0717	CLIP(4.8)	4
18	F0718	SCREW,TAPPING ST3.9×13	9
19	F0719	SCREW,TAPPING ST3.9×13	12
20	F0720	CLIP(4.2)	2



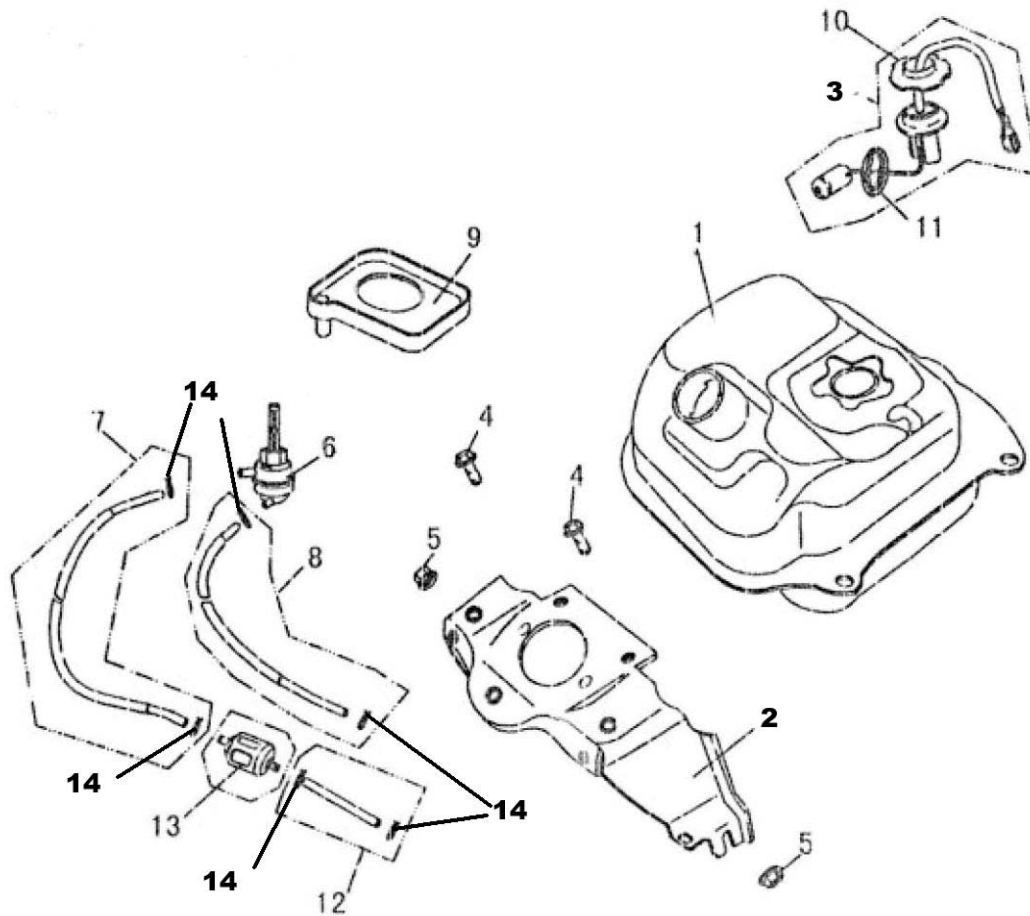
F-08 Cushion Body

REF.NO.	PART NO.	DESCRIPTION	Q.T.Y
1	F0801	CUSHION ASSY	1
2	F0802	Column	1
3	F0803	SEAT ASSEMBLING FRAME	1
4	F0804	ASSEMBLING FRAME WELDING ASSY	1
5	F0805	NUT M6	2
6	F0806	BOLT M6X12	2
7	F0807	TOOL SET	1
8	F0808	NUT M8	1
9	F0809	SEAT ASSY.	1



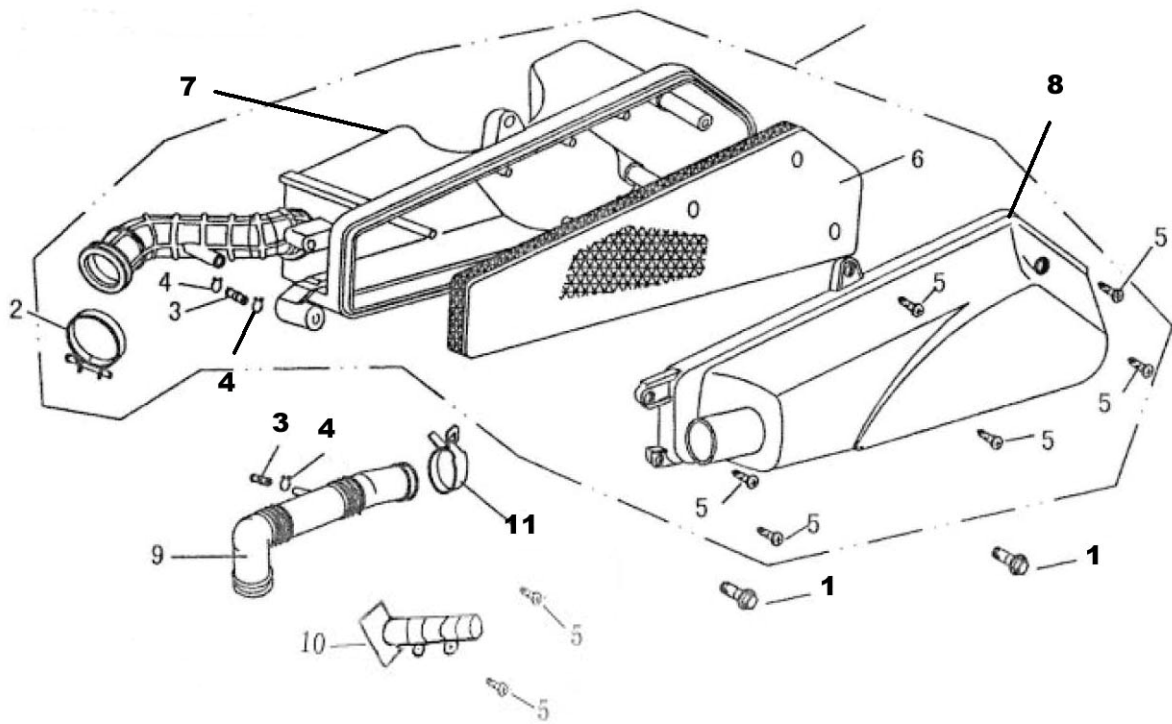
F-9 Body Cover/Luggage Box

REF.NO.	PART NO.	DESCRIPTION	Q.T.Y
1	F0901	CENTER PROTECT COVER	1
2	F0902	SCREW TAPPING M5×16	10
3	F0903	BOLT M6×12	3
4	F0904	POTHOOK(BIG)	1
5	F0905	CLIP NUT	1
6	F0906	LUGGAGE BOX INTER COVER	1
7	F0907	HOOK ASSEMBLING WELDING ASSY	1
8	F0908	LUGGAGE BOX	1
9	F0909	NUT M6	4
10	F0910	BOLT M5×18	2
11	F0911	SCREW TAPPING	8
12	F0912	LEFT SIDE COVER	1
13	F0913	LEFT TAIL COVER	1
14	F0914	RIGHT TAIL COVER	1
15	F0915	RIGHT SIDE COVER	1
16	F0916	TAIL COVER CONNECTING BOARD	1
17	F0917	TAIL LAMP COVER	1



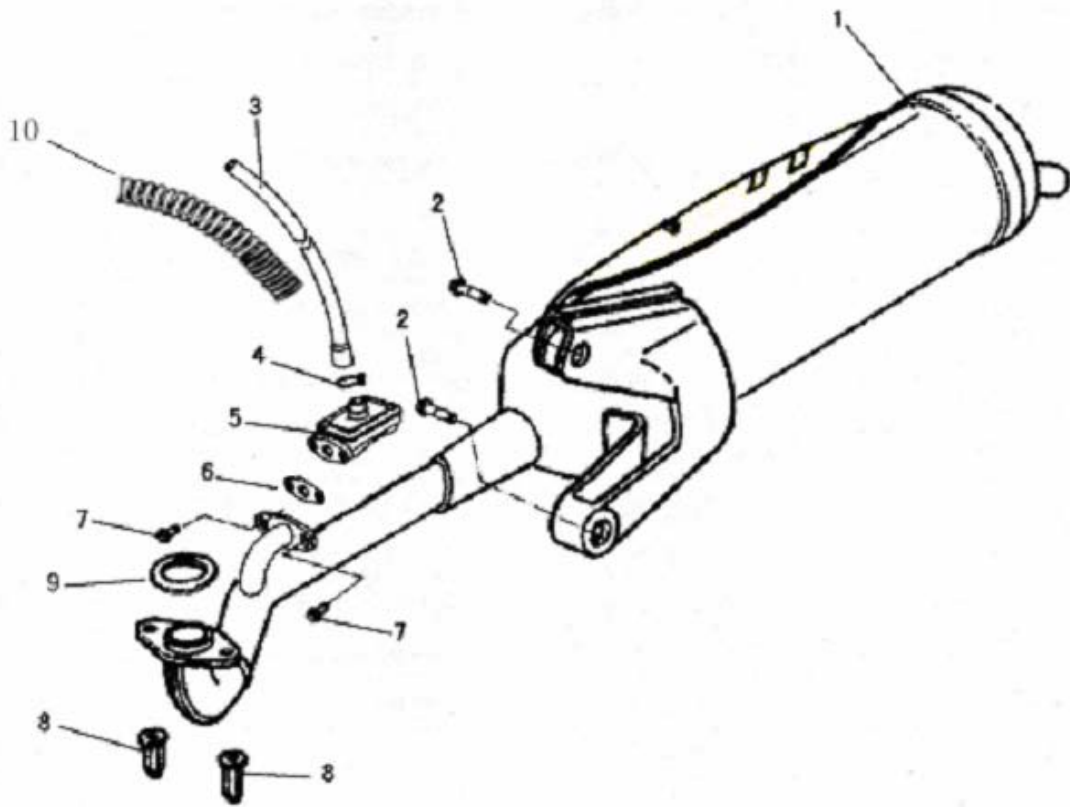
F-10 Fuel Tank

REF.NO.	PART NO.	DESCRIPTION	Q.T.Y
1	F1001	TANK WELDING ASSY	1
2	F1002	PLATE OF FIXING TANK	1
3	F1003	FUEL TRANSDUCER	1
4	F1004	BOLT M6X12	2
5	F1005	NUT M6	2
6	F1006	FUEL COCK	1
7	F1007	TUBE FUEL A	1
8	F1008	TUBE VJACUUM	1
9	F1009	COVER	1
10	F1010	TRANSDUCER PRESSURE COVER	1
11	F1011	SEAL	1
12	F1012	TUBE FUEL B	1
13	F1013	FILTER	1
14	F1014	CLIP,TUBE	5



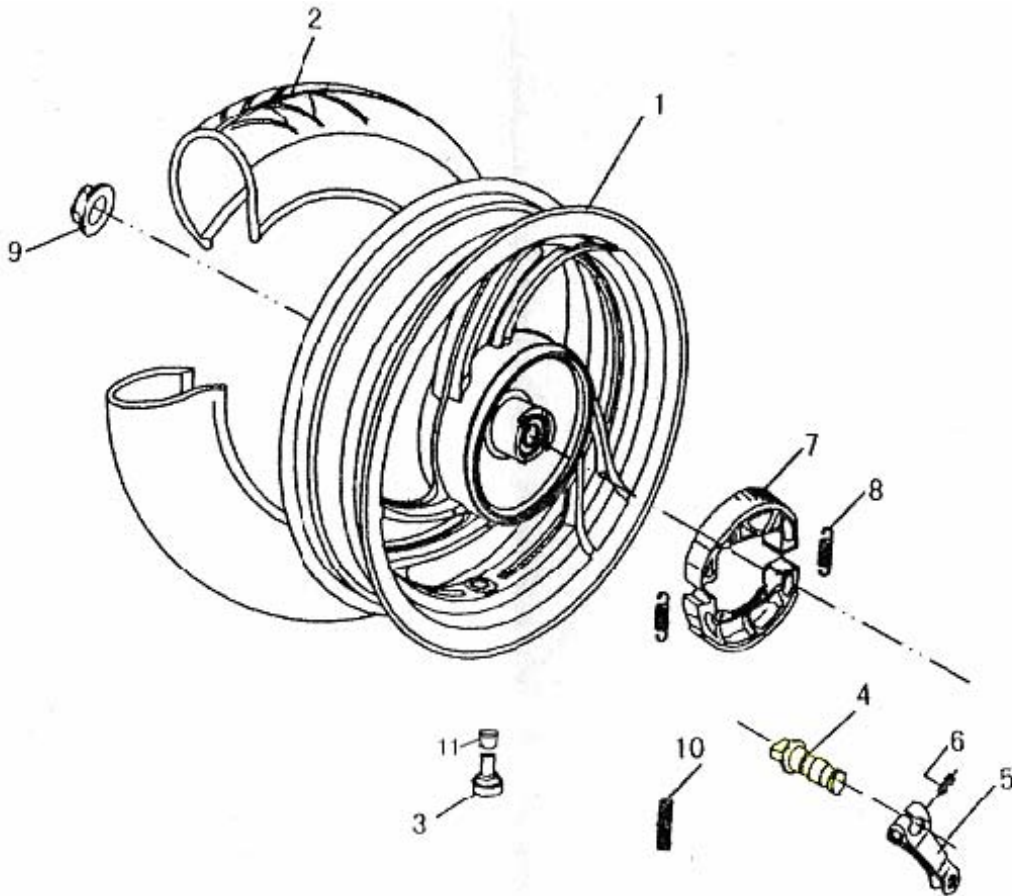
F-11 Air Cleaner

REF.NO.	PART NO.	DESCRIPTION	Q.T.Y
1	F1101	BOLT M6x30	2
2	F1102	CLIP,TUBE	2
3	F1103	TUBE	2
4	F1104	CLIP,TUBE(A)	3
5	F1105	SCREW ST4.2x19	8
6	F1106	AIR FILTER	1
7	F1107	BODY AIR CLEANER	1
8	F1108	COVER CLEANER	1
9	F1109	INLET TUBE	1
10	F1110	PIPE	1
11	F1111	CLAMP	1



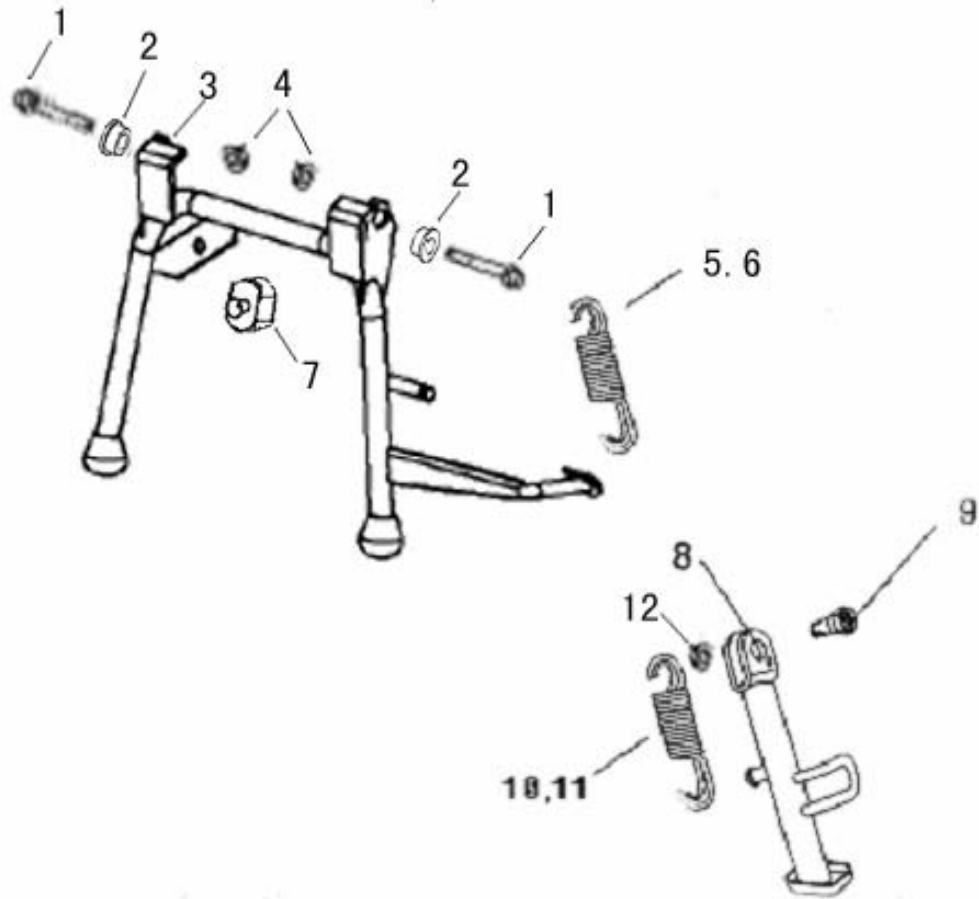
F-12 Exhaust Muffler

REF.NO.	PART NO.	DESCRIPTION	Q.T.Y
1	F1201	MUFFLER WELDING ASSY	1
2	F1202	BOLT M8X35	2
3	F1203	PIPE	1
4	F1204	HOOP	1
5	F1205	VALVE	1
6	F1206	WASHER PLAIN	1
7	F1207	BOLT M6X12	2
8	F1208	NUT M6	2
9	F1209	SEAL	1
10	F1210	SPRING	1



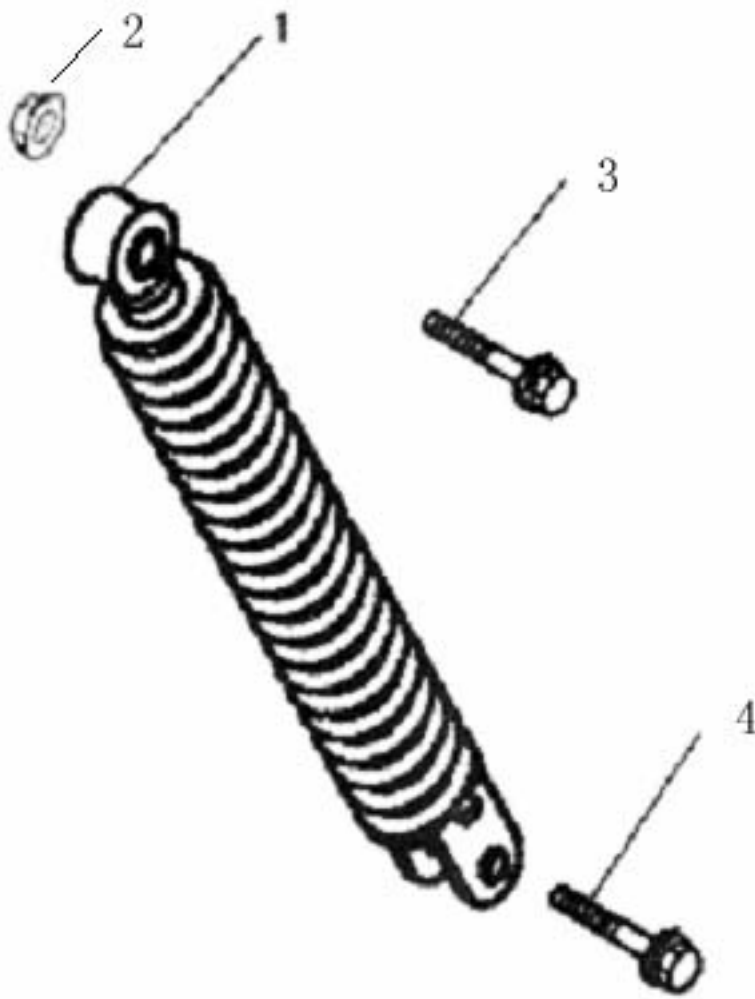
F-13 Rear Wheel

REF.NO.	PART NO.	DESCRIPTION	Q.T.Y
1	F1301	REAR RIM	1
2	F1302	TYRE3.50-10	1
3	F1303	VALVE	1
4	F1304	REAR BRAKE CAM	1
5	F1305	ROCKER REAR BRAKE	1
6	F1306	BOLTM6×35	1
7	F1307	BRAKE SHOE	2
8	F1308	SPRING	2
9	F1309	NUT M16	1
10	F1310	SPRING	1
11	F1311	CAP	1



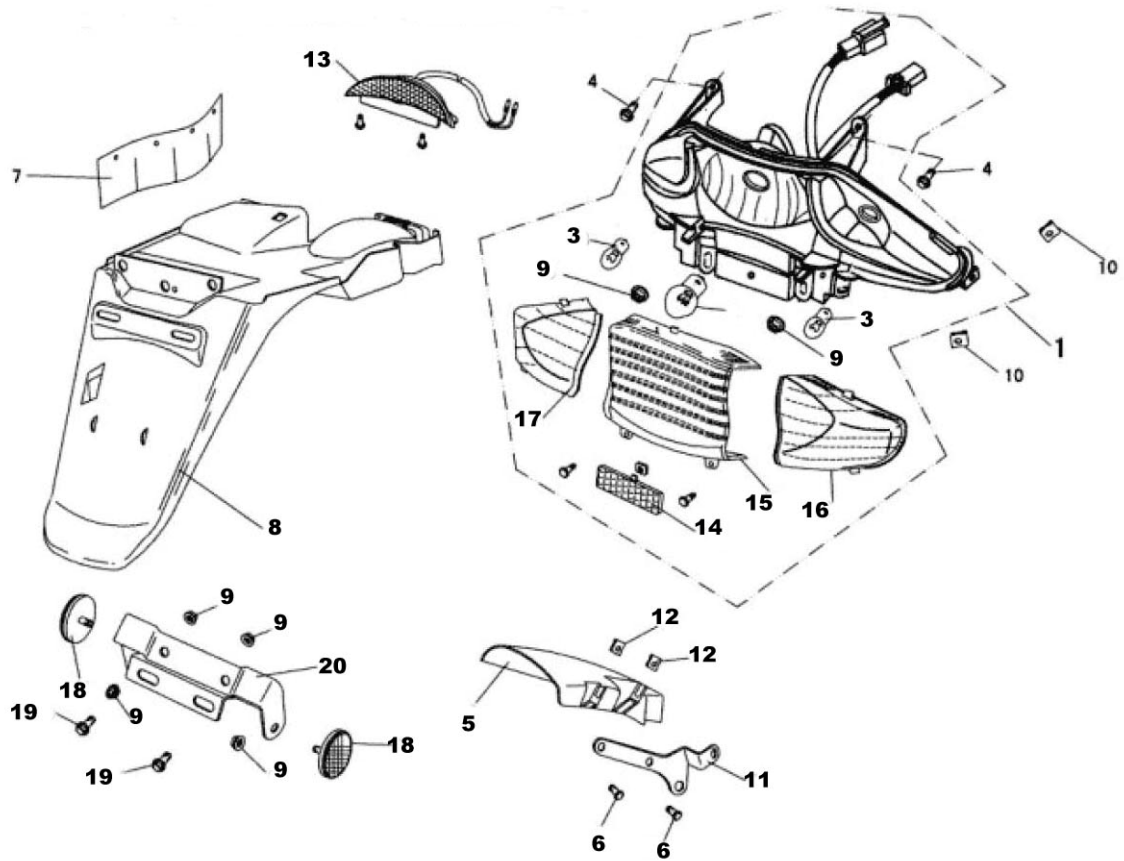
F-14 Main stand assy/Side stand assy

REF.NO.	PART NO.	DESCRIPTION	Q.T.Y
1	F1401	BOLT M8x50	1
2	F1402	BUSH	2
3	F1403	CENTER STAND	1
4	F1404	NUT M8	3
5	F1405	SPRING	1
6	F1406	SPRING	1
7	F1407	LIMIT SPACE RUBBER(STOPPER)	1
8	F1408	SIDE STAND WELDING ASSY	1
9	F1409	SIDE STAND ASSEMBLING COLUMN	1
10	F1410	SPRING	1
11	F1411	SPRING	1
12	F1412	NUT M8	1



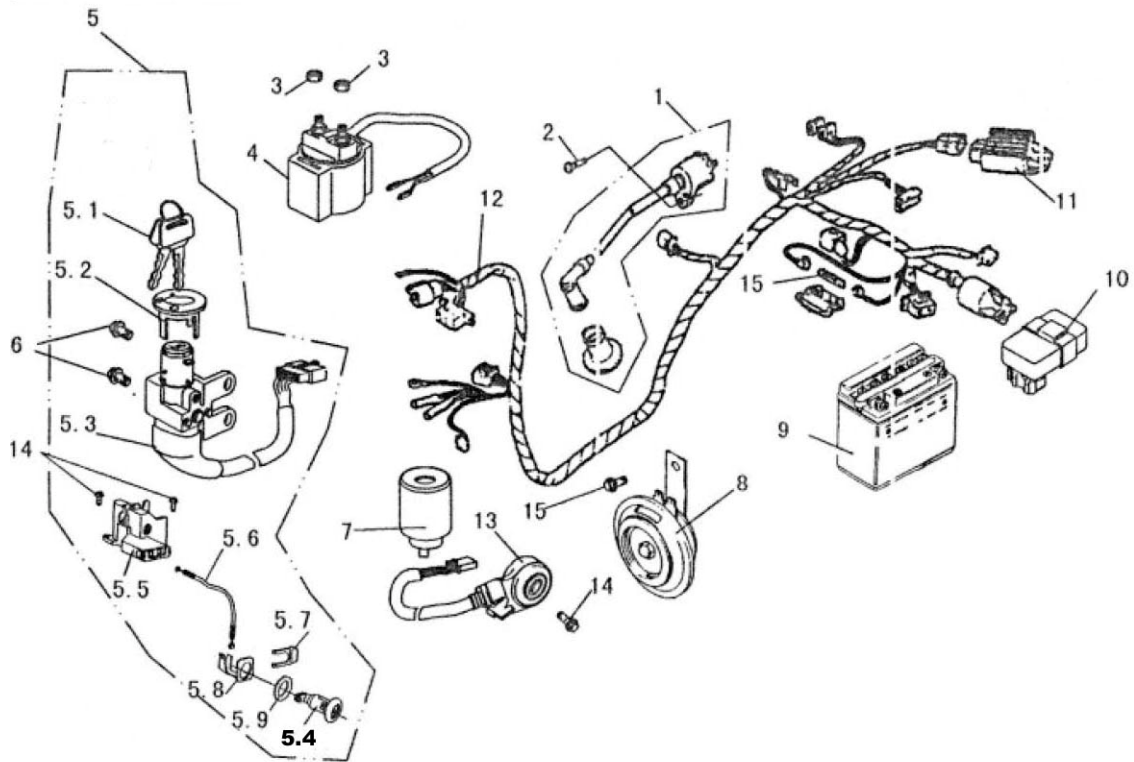
F-15 Rear shock absorber

REF.NO.	PART NO.	DESCRIPTION	Q.T.Y
1	F1501	REAR SHOCK ABSORBER ASSY	1
2	F1502	NUT m10	1
3	F1503	BOLT M10x70	1
4	F1504	BOLT M8x32	1



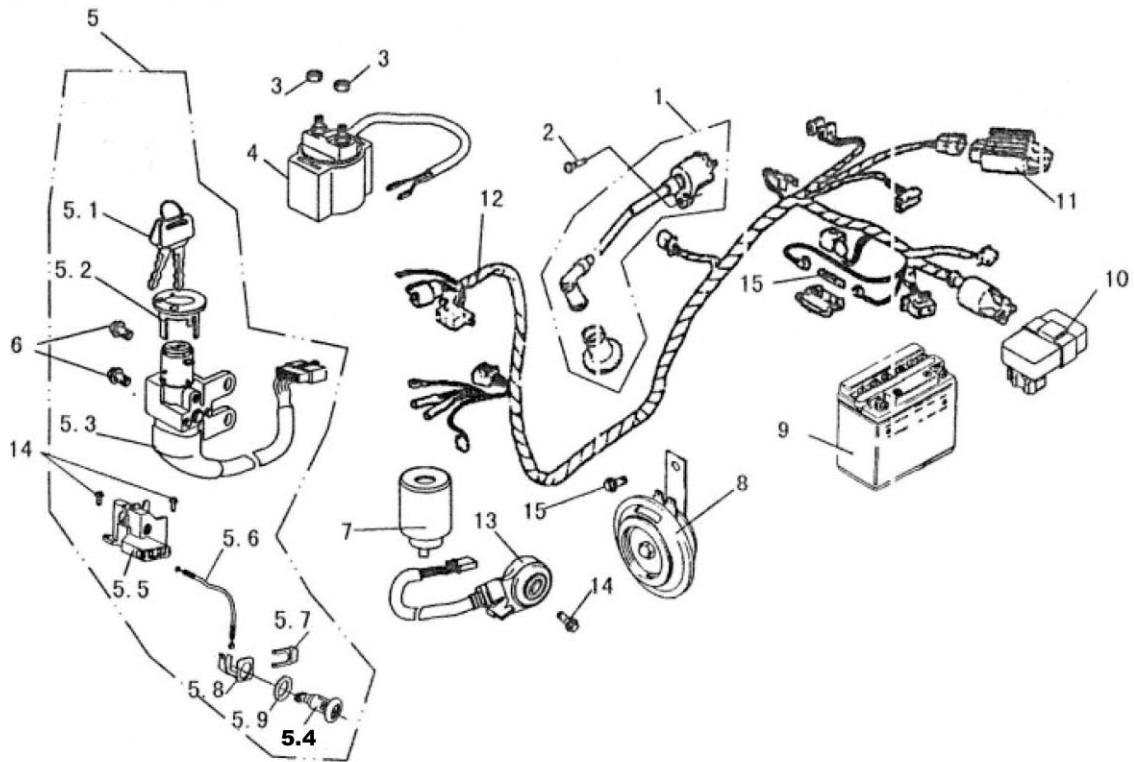
F-16 Rear light Assy/Rear Fender Assy

REF.NO.	PART NO.	DESCRIPTION	Q.T.Y
1	F1601	REAR LIGHT ASSY	1
2	F1602	TAIL LAMP	1
3	F1603	TURN SIGNAL LAMP	2
4	F1604	BOLT M6×18	2
5	F1605	SMALLFENDER	1
6	F1606	BOLT M5×12	2
7	F1607	BUBBER	1
8	F1608	REAR FENDER	1
9	F1609	NUT M6	6
10	F1610	CLIP(4.2)	4
11	F1611	FENDER FRAME	1
12	F1612	NUT CLIP	2
13	F1613	REAR REFLECT	1
14	F1614	TAIL LAMP COVER	1
15	F1615	TURN RIGHT LAMP COVER	1
16	F1616	TURN LEFT LAMP COVER	1
17	F1617	REFLECT	2
18	F1618	FLAT WASHER	2
19	F1619	ASSMENBLING FRAME	1



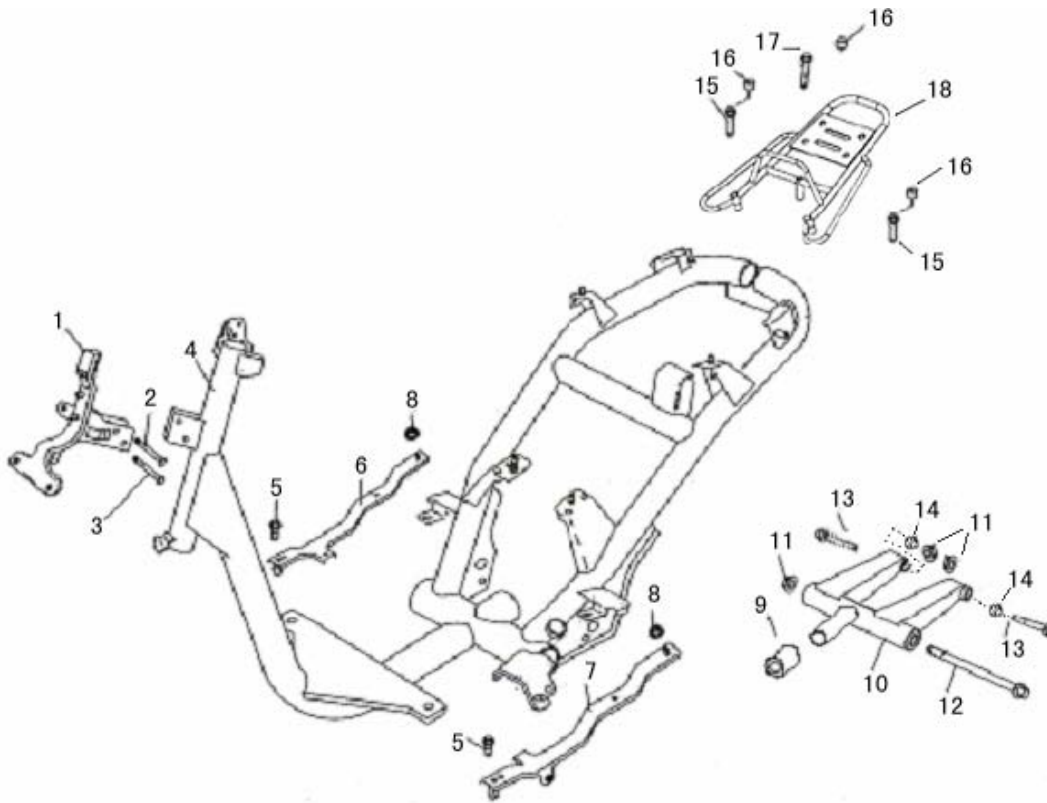
F-17 Wire harness

REF.NO.	PART NO.	DESCRIPTION	Q.T.Y
1	F1701	COIL ASSY IGNITION	1
2	F1702	BOLT M5×25	1
3	F1703	NUT M6	3
4	F1704	IGNITION COIL	1
5	F1705	SWITCH ASSY	1
6	F1706	BOLT M6X12	2
7	F1707	BASH RELAY	1
8	F1708	HORN COMP	1
9	F1709	BATTERY	1
10	F1710	CDI	1
11	F1711	RECTIFIER ADJUSTER	1
12	F1712	WIRING ASSY	1
13	F1713	(OFF)SWITCH ASSY	1



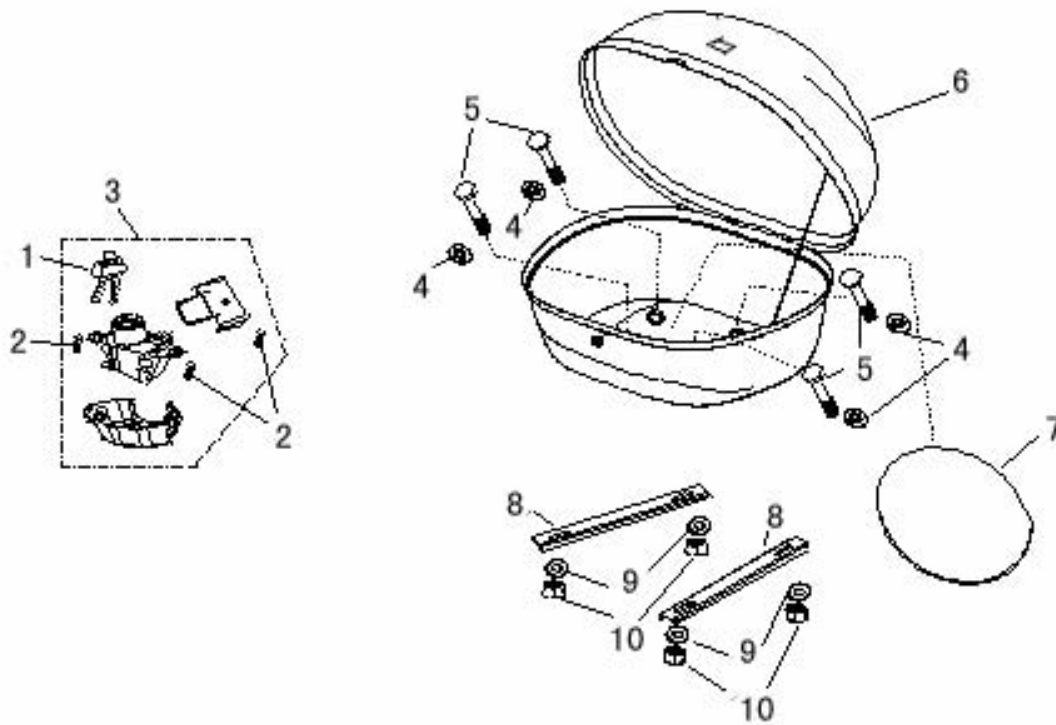
F-17 Wire harness

REF.NO.	PART NO.	DESCRIPTION	Q.T.Y
14	F1714	BOLT M6X12	3
15	F1715	FUSE	1
5.1	F1705.1	KEY	2
5.2	F1705.2	LOCK COVER, IGNITION SWITCH	1
5.3	F1705.3	Lock socket	1
5.4	F1705.4	CUSHION LOCK ASSY	1
5.5	F1705.5	SEAL LOCK ASSY	1
5.6	F1705.6	LINK , SEAT LOCK	1
5.7	F1705.7	SPRING SEAT LOCK	1
5.8	F1705.8	FASTENER, CUSHION LOCK	1
5.9	F1705.9	RUBBER RING	1



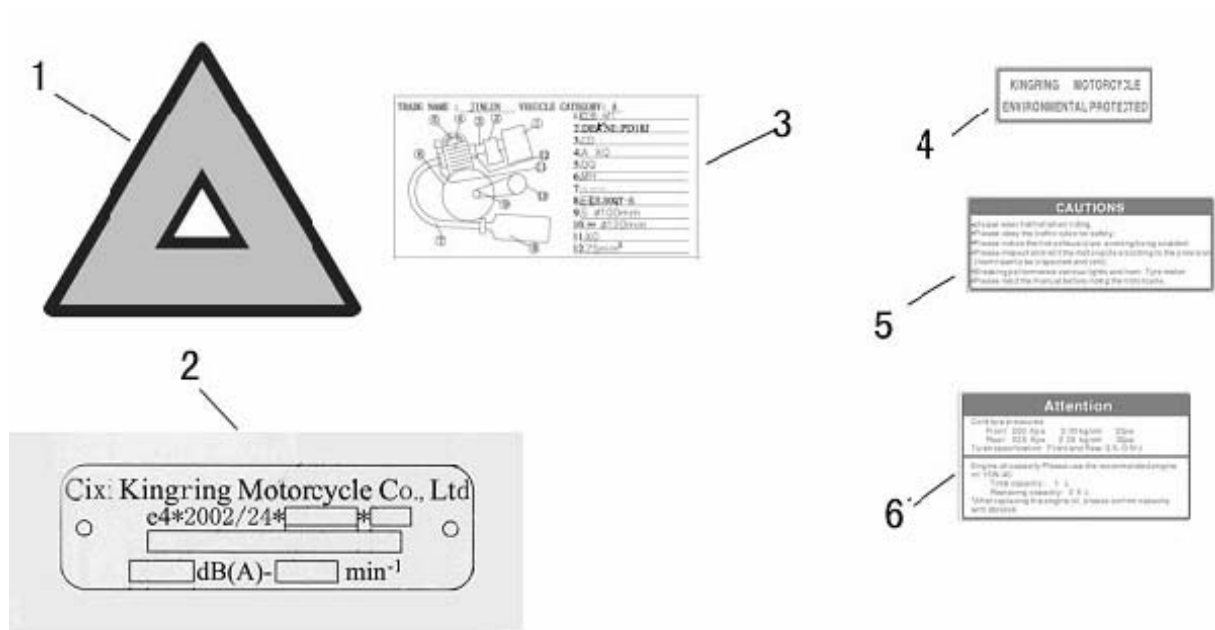
F-18 Frame

REF.NO.	PART NO.	DESCRIPTION	Q.T.Y
1	F1801	Fr. ASSEMBLING FRAME WELDING ASSY	1
2	F1802	BOLT FLANGE M6X30	1
3	F1803	BOLT FLANGE M6X35	1
4	F1804	MAIL FRAME WELDING ASSY	1
5	F1805	BOLT FLANGE M6X35	2
6	F1806	ASSEMBLING FRAME ASSY RH PEDAL	1
7	F1807	ASSEMBLING FRAME ASSY LH PEDAL	1
8	F1808	NUT M6	2
9	F1809	CUSHIN RUBBER	1
10	F1810	ROCK FRAME WELDING ASSY	1
11	F1811	NUT M10	3
12	F1812	SHAFT	1
13	F1813	BOLT M10x70	2
14	F1814	FLAT WASHER 10	2
15	F1815	BOLT HEX M8x34	2
16	F1816	RUBBER CAP	3
17	F1817	BOLT HEX M8x74	1
18	F1818	REAR CARRIER ASSY.	1



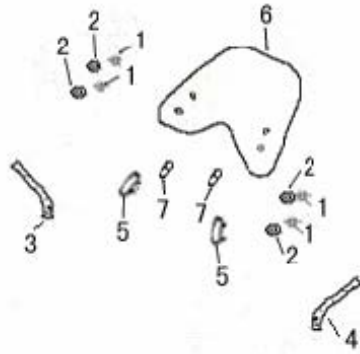
F-19 REAR CARRIER

REF.NO.	PART NO.	DESCRIPTION	Q.T.Y
1	F1901	KEY	2
2	F1902	BOLT M6X16	3
3	F1903	REAR CARGO BODY LOCK	1
4	F1904	WASHER	4
5	F1905	BOLT M6X40	4
6	F1906	REAR CARGO BODY	1
7	F1907	RUBBER WASHER	1
8	F1908	ADAPTER PLATE	2
9	F1909	FLAT WASHER	4
10	F1910	NUT M8	4



F-20 Mark

REF.NO.	PART NO.	DESCRIPTION	Q.T.Y
1	F2001	REAR FENDER CAUTIONS MARK	1
2	F2002	MAIN FRAME MARK	1
3	F2003	ANTI TAMPERING PLATE	1
4	F2004	SPEEDMETER COVER MARK A	1
5	F2005	SPEEDMETER COVER MARK B	1
6	F2006	FRONT COVER MARK	1



F-21 FRONT GLASS

REF.NO.	PART NO.	DESCRIPTION	Q.T.Y
1	F2101	NUT	2
2	F2102	RUBBERWASHER	2
3	F2103	R.FIXED PALTE	1
4	F2104	L.FIXED PALTE	1
5	F2105	FIXED BLOCK	2
6	F2106	FRONT GLASS	1
7	F2107	RUBBER CUSION	2